



SIGGI HORECA

Veste
l'ospitalità.

*Clothes
hospitality.*



SIGGI HORECA

 **MasterChef**
ITALIA



grembiuli
aprons



accessori
accessories



giacca chef
chef jacket



pantaloni
trousers

Siggi Group, firma la Collezione MasterChef Italia, l'unica e originale dedicata a tutti gli appassionati di cucina e del più popolare talent show culinario.

Siggi Group, signs the exclusive MasterChef Collection, the only original, dedicated to the lovers of cooking and of the most popular cooking show.

**EndemolShine
Group**

© 2017 Endemol Shine Group

1



2

1 GREMBIULE MASTERCHEF

MASTERCHEF APRON
ART.26PZ0332

Tessuto / Fabric
35% Cotone / Cotton
65% Poliestere / Polyester
190 gr/m²

Taglie / Sizes
Unica / One size
(h. 83)

Colori / Colours
Bianco / White **0001**

Nero / Black **8000**

Rosso / Red **2000**

Azzurro / Light blue **4065**



 **Junior**
MasterChef
ITALIA

2 GREMBIULE JUNIOR

MASTERCHEF
JUNIOR MASTERCHEF APRON
ART.26PZ0337

Tessuto / Fabric
35% Cotone / Cotton
65% Poliestere / Polyester
190 gr/m²

Taglie / Sizes
Unica / One size
(h. 72,5)

Colori / Colours
Bianco / White **0001**

Rosso / Red **2000**

Azzurro / Light blue **4065**





1 CAPPELLO MASTERCHEF
MASTERCHEF HAT
ART.26BE0160
Tessuto / Fabric 35% Cotone / Cotton 65% Poliestere / Polyester 130 gr/m²
Colori / Colours Bianco / White 0001
Taglie / Sizes Unica / One size 

2 GIACCA MASTERCHEF
MASTERCHEF JACKET
ART.26GA0197
Tessuto / Fabric 100% Cotone / Cotton 190 gr/m²
Colori / Colours Bianco / White 0001
Taglie / Sizes XS - XXXL 
▲ **Ampia gamma taglie**
Wide sizes range

3 FAZZOLETTO MASTERCHEF
MASTERCHEF HANDKERCHIEF
ART.26SE0212
Tessuto / Fabric 35% Cotone / Cotton 65% Poliestere / Polyester 130 gr/m²
Colori / Colours Bianco / White 0001
Taglie / Sizes Unica / One size 
▲ **Confezione da 5 pezzi**
Packaging 5 pcs

4 STROFINACCIO MASTERCHEF
MASTERCHEF DISHRAG
ART.26SE0211
Tessuto / Fabric 100% Cotone / Cotton 250 gr/m²
Colori / Colours Bianco / White 0001
Taglie / Sizes Unica / One size 
▲ **Confezione da 3 pezzi**
Packaging 3 pcs

5 PANTALONI MASTERCHEF
MASTERCHEF TROUSERS
ART.26PA0955
Tessuto / Fabric 35% Cotone / Cotton 65% Poliestere / Polyester 190 gr/m²
Colori / Colours Bianco / White 0001 Nero / Black 8000
Taglie / Sizes XS - XXXL 



1



2



1 TSHIRT UOMO MASTERCHEF

MASTERCHEF MALE TSHIRT
ART.26MAO414

Tessuto / Fabric
100% Cotone / Cotton
150 gr/m²

Taglie / Sizes
S - XL

Colori / Colours
Bianco / White **0001**

Nero / Black **8000**



2 TSHIRT DONNA MASTERCHEF

MASTERCHEF WOMAN TSHIRT
ART.26MAO415

Tessuto / Fabric
100% Cotone / Cotton
150 gr/m²

Taglie / Sizes
S - XL

Colori / Colours
Bianco / White **0001**

Nero / Black **8000**





1



2



3



4

1 GREMBIULE MASTERCHEF
MASTERCHEF APRON
ART.26PZ0363

Tessuto / Fabric
35% Cotone / Cotton
65% Poliestere / Polyester
195 gr/m²

Taglie / Sizes
Unica / One size
(h. 84,5)

Colori / Colours 9573 



2 GUANTONE MASTERCHEF
MASTERCHEF OVEN MIT
ART.26GN0002

Tessuto / Fabric
35% Cotone / Cotton
65% Poliestere / Polyester
195 gr/m²

Taglie / Sizes
Unica / One size

Colori / Colours 9573 



3 PRESINA MASTERCHEF
MASTERCHEF POT HOLDER
ART.26PR0001

Tessuto / Fabric
35% Cotone / Cotton
65% Poliestere / Polyester
195 gr/m²

Taglie / Sizes
Unica / One size

Colori / Colours 9573 

Confezione da 2 pezzi
Packaging 2 pcs



4 TOVAGLIETTA MASTERCHEF
MASTERCHEF PLACEMAT
ART.26T00039

Tessuto / Fabric
35% Cotone / Cotton
65% Poliestere / Polyester
195 gr/m²

Taglie / Sizes
Unica / One size

Colori / Colours 9573 





giacca chef
chef jacket

P.24



grebiuli
aprons

P.64



pantaloni
trousers

P.76



accessori
accessories

P.86



1



2



Guarda il video
dei pantaloni Trinity
Watch the Trinity video

HOST 2017
SMART
LABEL

1 GIACCA TRINITY
ART.28GA0243

GIACCA CHEF / CHEF JACKET

Tessuto / Fabric
63% Cotone / Cotton
35% Poliestere / Polyester
2% Elastan
230 gr/m²

Taglie / Sizes
I° 42-44-46 II° 48-50-52 III° 54-56-58

Colori / Colours
Bianco / White 0001



**Tecnologia multisize
brevettata: 3 taglie in una**

Multisize patented technology: 3 sizes in one

Tessuto elasticizzato

Stretch fabric

**Zip multicursore sul fronte,
sul retro e sui fianchi per consentire
massima adattabilità e traspirazione**

Multi-slider zippers in front, back and sides
for best wearability and transpiration



2 PANTALONI TRINITY
ART.28PA1114

PANTALONI CHEF / CHEF TROUSERS

Tessuto / Fabric
98% Cotone / Cotton
2% Elastan
245 gr/m²

Taglie / Sizes
I° 42-44-46 II° 48-50-52 III° 54-56-58

Colori / Colours
Pied de poule 8500



**Tecnologia multisize
brevettata: 3 taglie in una**

Multisize patented technology: 3 sizes in one

Tessuto elasticizzato

Stretch fabric

**Sui fianchi scorrono le zip che
permettono di regolare la misura
in vita, sui fianchi e gambe**

Two zippers on sides to adjust
waist, hips and leg sizes

**Sul davanti la misura si regola grazie
alle zip poste sopra alle tasche**

On the front the size is adjustable thanks
to the zipper above the pocket.

**Sul retro due alamari regolabili in vita
in tre posizioni con bottone a pressione**

On the rear two frogging closures
adjustable with snap buttons.





1

1 BEN
ART.28GA0252
GIACCA CHEF / CHEF JACKET

Tessuto / Fabric
57% Modal
37% Poliestere / Polyester
6% Elastan
160 gr/m²

Taglie / Sizes
XS - XXXL

Colori / Colours

Bianco e grigio / White and grey 0765


Bianco e ottanio / White and teal green 0764



▲ **Chiusura monopetto con bottoni a pressione**
Snap buttons



 **JOSH**
ART. 28PA0879
PANTALONI / TROUSERS
P. 79

 **STAN**
ART. 04PA1119/00-0866
PANTALONI / TROUSERS
P. 313



1 ALAN
ART.28GA0250
GIACCA CHEF / CHEF JACKET

Tessuto / Fabric
55% Cotone / Cotton
42% Poliestere / Polyester
3% Elastan
160 gr/m²

Taglie / Sizes
XS - XXXL

Colori / Colours
Bianco / White **0001**

Blu / Blue **4077**



▲ **Chiusura diagonale con bottoni a pressione nascosti**

Diagonal closure with snap buttons

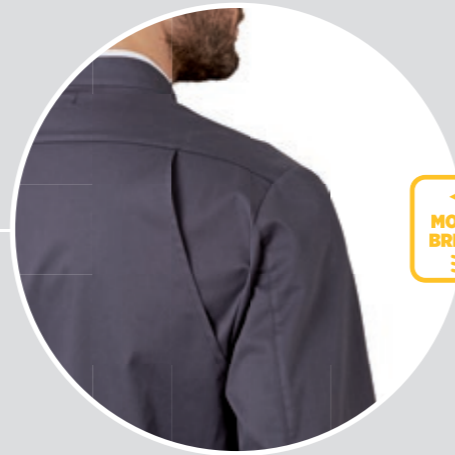
▲ **Taschino su manica sinistra**

Small pocket on left shoulder



 **CLAIRE**
ART. 28GA0248
GIACCA CHEF / CHEF JACKET
P.59

1



MOVE & BREATHE



↑ **JACK**
ART. 28BE0008/00-0757
BERRETTO CHEF / CHEF HAT
P. 87



1 FLOYD
ART.28GA0251
GIACCA CHEF / CHEF JACKET

Tessuto / Fabric
55% Cotone / Cotton
42% Poliestere / Polyester
3% Elastan
160 gr/m²

Taglie / Sizes
XS - XXXL

Colori / Colours
Bianco / White **0001**
Blu / Blue **4077**
Grigio / Grey **8057**



▶ **Doppiopetto con bottoni a funghetto**
Double-breasted jacket with interchangeable ball buttons

▶ **Bottone rosso a contrasto e bottone sostitutivo in dotazione**
Red button for color contrast; button supplied for replacement

Apertura sulla schiena con tessuto sovrapposto per migliorare il movimento e la traspirabilità
Technical feature: fabric overlay on the back for best movement and transpiration



DALILA
ART. 28GA0249
GIACCA CHEF / CHEF JACKET
P. 57



1



2

1 LANNY
ART.28GA0254
GIACCA CHEF / CHEF JACKET

Tessuto / Fabric
63% Cotone / Cotton
35% Poliestere / Polyester
2% Elastan
230 gr/m²
Taglie / Sizes
XS - XXXL
Colori / Colours
Bianco / White 0001



▶ **Giacca chef top di gamma con chiusura doppiopetto con bottoni a funghetto; bottoni a scomparsa nella parte inferiore**
Top level double breasted jacket with ball buttons above and hidden buttons below

▶ **Tessuto elasticizzato, linea slim**
Stretch fabric, slim fit



2 CESARE
ART.28GA0207
GIACCA CHEF / CHEF JACKET

Tessuto / Fabric
97% Cotone / Cotton
3% Elastan
215 gr/m²
Taglie / Sizes
42 - 60
Colori / Colours
Bianco / White 0001



▶ **Giacca chef top di gamma dal taglio elegante e sagomato**
Top Chef jacket; smart and shaping style

▶ **Bottoni cuciti e ricoperti in tessuto**
Sewed buttons covered with fabric

▶ **Tessuto elasticizzato con lavorazione a nido d'ape**
Stretch honeycomb fabric



1



2



1 PATRICK
ART.28GA0216
GIACCA CHEF / CHEF JACKET

Tessuto / Fabric
50% Cotone / Cotton
47% Poliestere / Polyester
3% Elastan
235 gr/m²

Taglie / Sizes
XS - XXXL

Colori / Colours
Blu effetto jeans / Jeans effect 4073



► **Morbido tessuto tecnico, massimo comfort**
Soft technical fabric for best comfort

► **Chiusura diagonale con zip**
Diagonal zip closure

 **Inserti in costina e in rete traspirante**
Breathable air vents



2 KIRK
ART.28GA0253
GIACCA CHEF / CHEF JACKET


Tessuto / Fabric
55% Cotone / Cotton
42% Poliestere / Polyester
3% Elastan
160 gr/m²

Taglie / Sizes
XS - XXXL

Colori / Colours
Bianco / White 0001



► **Chiusura diagonale con zip**
Diagonal zip closure

 **Inserti traspiranti sottomanica**
Breathable air vents



1



1 VICTOR
ART.28GA0218

GIACCA CHEF / CHEF JACKET

Tessuto / Fabric

55% Cotone / Cotton
42% Poliestere / Polyester
3% Elastan
160 gr/m²

Taglie / Sizes

XS - XXXL

Colori / Colours

Bianco e nero / White and black **0721**

Bianco e tabacco / White and tobacco **0758**

Bianco e tortora / White and grey **0737**



▲ **Chiusura con bottoni a pressione**

Snap buttons closure


▲ **Tessuto elasticizzato, massimo comfort**

Stretch fabric for best comfort

▲ **Profili colorati a contrasto**

Color contrast piping



 **AUSTIN**
ART. 28PA0928
PANTALONI / TROUSERS
P. 81

 **JOSH**
ART. 28PA0879
PANTALONI / TROUSERS
P. 79

 **JOSH**
ART. 28PA0879
PANTALONI / TROUSERS
P. 79

1



1 GABRIEL
ART.28GA0209

GIACCA CHEF / CHEF JACKET

Tessuto / Fabric

55% Cotone / Cotton
42% Poliestere / Polyester
3% Elastan
160 gr/m²

Taglie / Sizes

XS - XXXL

Colori / Colours

Bianco / White 0001



Sabbia 7025



Tabacco / Tobacco 7061



▶ **Tessuto elasticizzato, massimo comfort**

Stretch fabric for best comfort

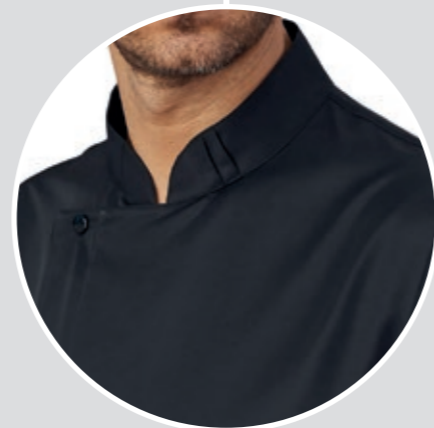
▶ **Taschino su spalla sinistra**

Small pocket left shoulder



Indossato dai concorrenti
de "Il Ristorante degli Chef"

 → **LONDRA**
ART. 28PZ0343
GREMBIULE UNISEX / UNISEX APRON
P. 69



1 SEBASTIAN
ART.28GA0208
GIACCA CHEF / CHEF JACKET

Tessuto / Fabric
100% Microfibra poliestere / Polyester microfiber
130 gr/m²

Taglie / Sizes
XS - XXXL

Colori / Colours
Bianco / White **0001**



Nero / Black **8000**



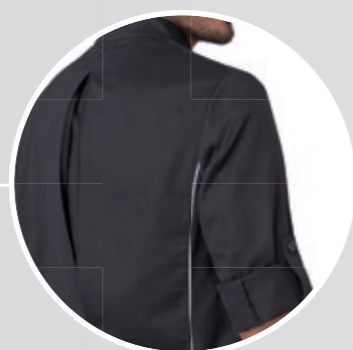
▶ **Tessuto in microfibra, massimo comfort**
Microfiber fabric for best comfort

▶ **Chiusura con zip coperta**
Covered zip closure

▶ **Taschino manica**
Shoulder pocket

 **Soffietti sulla schiena per massima traspirazione**
Breathable air vents on the back shoulder






1 ALEX
ART.28GA0191
GIACCA CHEF / CHEF JACKET

Tessuto / Fabric
100% Cotone drill sanfor / Drill sanfor cotton
190 gr/m²

Taglie / Sizes
XS - XXXL

Colori / Colours
Bianco / White 0001

Nero / Black 8000

 **Manica avvolgibile con taschino**
Foldable sleeves with pocket

 **Inserti in tessuto traspirante**
Underarm airvents

 **Soffietto sulla schiena**
Vents on the back



2 THOMAS
ART.28GA0205
GIACCA CHEF / CHEF JACKET

Tessuto / Fabric
55% Cotone / Cotton
42% Poliestere / Polyester
3% Elastan
160 gr/m²

Taglie / Sizes
XS - XXXL

Colori / Colours
Bianco / White 0001

 **Chiusura coperta con bottoni a pressione**
Covered closure with snap buttons

 **Inserti sagomati in rete su spalle e schiena per massimo comfort e traspirazione**

Breathable shaped airvents on shoulders and back for best comfort





1



2



1 ADAM
ART.28GA0206
GIACCA CHEF / CHEF JACKET

Tessuto / Fabric
35% Cotone / Cotton
65% Poliestere / Polyester
130 gr/m²

Taglie / Sizes
XS - XXXL

Colori / Colours
Bianco / White 0001

Nero / Black 8000

▶ Tessuto popeline: massimo comfort e facilità di manutenzione

Popeline fabric: best comfort and easy maintenance

▶ Apertura con bottoni a pressione

Closure with snap buttons



2 STEWART
ART.28GA0176
GIACCA CHEF / CHEF JACKET

Tessuto / Fabric
Raso / Satin
60% Cotone / Cotton
40% Poliestere / Polyester
200 gr/m²


Taglie / Sizes
XS - XXXL

Colori / Colours
Bianco / White 0001

▶ Inserti in tessuto traspirante
Underarm airvents





 **AUSTIN**
ART. 28PA0928
PANTALONI / TROUSERS
P. 81

 **JOSH**
ART. 28PA0879
PANTALONI / TROUSERS
P. 79

ADRIAN

1 ART.28GA0193/00
GIACCA CHEF / CHEF JACKET

Tessuto / Fabric
60% Cotone / Cotton
40% Poliestere / Polyester
200 gr/m²

Taglie / Sizes
XS - XXXL

Colori / Colours
Bianco e tortora / White and dove grey 0001 

 **Inserti in tessuto traspirante**
Underarm airvents



2 ART.28GA0193/01
GIACCA CHEF / CHEF JACKET

Tessuto / Fabric
60% Cotone / Cotton
40% Poliestere / Polyester
200 gr/m²

Taglie / Sizes
XS - XXXL

Colori / Colours
Bianco e Blu / White and Blue 0739 


 **Inserti in tessuto traspirante**
Underarm airvents



3 **GIACOMO**
ART.28GA0202
GIACCA CHEF / CHEF JACKET

Tessuto / Fabric
100% Cotone / Cotton
190 gr/m²

Taglie / Sizes
S - XXXL

Colori / Colours
Nero / Black 8000 





1



2

1 CARUSO
ART.28GA0177
GIACCA CHEF / CHEF JACKET


Tessuto / Fabric
Raso / Satin
60% Cotone / Cotton
40% Poliestere / Polyester
200 gr/m²
Taglie / Sizes
XS - XXXL
Colori / Colours
Bianco / White 0001



2 ARTUR
ART.28GA0029
GIACCA CHEF / CHEF JACKET

Tessuto / Fabric
100% Cotone drill sanfor / Drill sanfor cotton
190 gr/m²
Taglie / Sizes
XS - XXXL
Colori / Colours
Bianco / White 0001



 **TRENTO**
ART. 28PZ0003/00-0014
GREMBIULE / APRON
P. 67



1



2



3

1 MARCO
ART.28GA0027/01

GIACCA CHEF / CHEF JACKET

Tessuto / Fabric

100% Cotone drill sanfor / Drill sanfor cotton
190 gr/m²

Taglie / Sizes

S - XXXL

Colori / Colours

Bianco / White 0001



Profilo nero

Black piping



2 FLAVIO
ART.28GA0027/00

GIACCA CHEF / CHEF JACKET

Tessuto / Fabric

100% Cotone drill sanfor / Drill sanfor cotton
190 gr/m²

Taglie / Sizes

S - XXXL

Colori / Colours

Bianco / White 0001



Profilo bluette

Blue piping



3 PIETRO
ART.28GA0028

GIACCA CHEF / CHEF JACKET

Tessuto / Fabric

100% Cotone drill sanfor / Drill sanfor cotton
190 gr/m²

Taglie / Sizes

S - XXXL

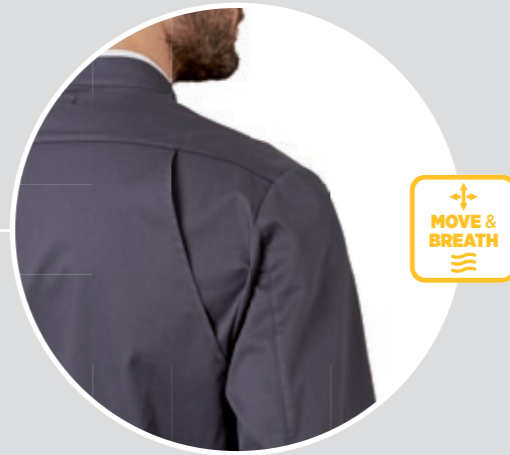
Colori / Colours

Bianco / White 0001





1



MOVE & BREATHE



1 DAVIN
ART.28GA0255

GIACCA CHEF MANICA CORTA / SHORT SLEEVES CHEF JACKET

Tessuto / Fabric

55% Cotone / Cotton
42% Poliestere / Polyester
3% Elastan
160 gr/m²



Taglie / Sizes

XS - XXXL

Colori / Colours

Bianco / White 0001



Blu / Blue 4077



Grigio / Grey 8057



▶ Doppipetto con bottoni a funghetto

Double-breasted jacket
with removable ball buttons

▶ Bottone rosso a contrasto e bottone sostitutivo in dotazione

Red button for color contrast;
button supplied for replacement

▶ Apertura sulla schiena con tessuto sovrapposto per migliorare il movimento e la traspirabilità

Technical feature: fabric overlay on the
back for best movement and transpiration



JACK
ART. 28BE0008/00-0757
BERRETTO CHEF / CHEF HAT
P. 87

1



2



1 NICK
ART.28GA0221

GIACCA CHEF MANICA CORTA / SHORT SLEEVES CHEF JACKET

Tessuto / Fabric
55% Cotone / Cotton
42% Poliestere / Polyester
3% Elastan
160gr/m²



Taglie / Sizes
XS - XXXL

Colori / Colours
Bianco / White 0001

▶ **Tessuto elasticizzato, massimo comfort**
Stretch fabric for best comfort



2 ANTONIO
ART.28GA0030

GIACCA CHEF MANICA CORTA / SHORT SLEEVES CHEF JACKET

Tessuto / Fabric
100% Cotone drill sanfor / Drill sanfor cotton
190 gr/m²

Taglie / Sizes
S - XXXL

Colori / Colours
Bianco / White 0001



1



 → **JACK**
ART. 28BE0008
BERRETTO CHEF / CHEF HAT
P. 87



1 DALILA
ART. 28GA0249

GIACCA CHEF DONNA / *WOMAN CHEF JACKET*

Tessuto / Fabric

55% Cotone / Cotton
42% Poliestere / Polyester
3% Elastan
160 gr/m²



Taglie / Sizes

XS - XXXL

Colori / Colours

Bianco / White **0001**



Blu / Blue **4077**



Grigio / Grey **8057**



▶ **Tessuto elasticizzato**

Stretch fabric

▶ **Chiusura doppiopetto con bottoni a funghetto**

Double breasted jacket with removable ball buttons

▶ **Vestibilità slim**

Slim fit



 **FLOYD**
ART. 28GA0251
GIACCA CHEF / CHEF JACKET
P. 31

1



 **STAN**
ART. 04PA1119
PANTALONI / TROUSERS
P. 313

1 CLAIRE
ART. 28GA0248

GIACCA CHEF DONNA / WOMAN CHEF JACKET

Tessuto / Fabric
55% Cotone / Cotton
42% Poliestere / Polyester
3% Elastan
160 gr/m²



Taglie / Sizes
XS - XXXL

Colori / Colours
Bianco / White 0001

Blu / Blue 4077

Grigio / Grey 8057

 **Chiusura diagonale con bottoni a pressione**

Diagonal closure with snap buttons



Apertura sulla schiena con tessuto sovrapposto per migliorare il movimento e la traspirabilità

Technical feature: fabric overlay on the back for best movement and transpiration



 **ALAN**
ART. 28GA0250
GIACCA CHEF / CHEF JACKET
P. 29



1



2



1 AMABEL
ART.28GA0194
GIACCA CHEF DONNA / *WOMAN CHEF JACKET*

Tessuto / Fabric
100% Cotone drill sanfor / Drill sanfor cotton
190 gr/m²

Taglie / Sizes
S - XXXL

Colori / Colours
Bianco / White **0001**

Nero / Black **8000**



2 MINA
ART.28GA0215
GIACCA CHEF DONNA / *WOMAN CHEF JACKET*

Tessuto / Fabric
55% Cotone / Cotton
42% Poliestere / Polyester
3% Elastan
160 gr/m²

Taglie / Sizes
XS - XXXL

Colori / Colours
Bianco / White **0001**



▲ **Chiusura con bottoni a pressione**
Snap buttons closure

 **Inserti in tessuto traspirante**
Underarm airvents





1



2

1 EMMA
ART.28GA0036
GIACCA CHEF DONNA / *WOMAN CHEF JACKET*

Tessuto / *Fabric*
100% Cotone drill sanfor / *Drill sanfor cotton*
190 gr/m²

Taglie / *Sizes*
S - XXXL

Colori / *Colours*
Bianco / *White* 0001



2 KIKO
ART.28GA0157
GIACCA CHEF DONNA / *WOMAN CHEF JACKET*

Tessuto / *Fabric*
100% Cotone drill sanfor / *Drill sanfor cotton*
190 gr/m²

Taglie / *Sizes*
S - XXXL

Colori / *Colours*
Bianco e Lilla / *White and Lilac* 0709



→ **VICTOR**
ART. 28GA0218/02
GIACCA CHEF / CHEF JACKET
P. 37



1

→ **ADRIAN**
ART. 28GA0193/00
GIACCA CHEF / CHEF JACKET
P. 47



2

→ **VICTOR**
ART. 28GA0218/03
GIACCA CHEF / CHEF JACKET
P. 37



TRENTO

1 ART.28PZ0003/00-0757

GREMBIULE / APRON

Tessuto / Fabric
55% Cotone / Cotton
42% Poliestere / Polyester
3% Elastan
160 gr/m²

Taglie / Sizes
UNICA / ONE SIZE
(h. 90 - l. 98)

Colori / Colours
Tabacco / Tobacco **7061**

Sabbia / Sand **7025**



2 ART.28PZ0003/00-0676

GREMBIULE / APRON

Tessuto / Fabric
20% Cotone / Cotton
76% Poliestere / Polyester
4% Elastan
166 gr/m²

Taglie / Sizes
UNICA / ONE SIZE
(h. 90 - l. 98)

Colori / Colours
Tortora / Dove grey **7038**



ALTRE VARIANTI →



 → **ADRIAN**
ART. 28GA0193/01
GIACCA CHEF / CHEF JACKET
P. 47



1 **TRENTO**
ART.28PZ0003/00-0014

GREMBIULE / APRON

Tessuto / Fabric

100% Cotone drill sanfor / Drill sanfor cotton
190 gr/m²

Taglie / Sizes

UNICA / ONE SIZE
(h. 90 - l. 98)

Colori / Colours

Bianco / White **0001**



Nero / Black **8000**



Blu / Blue **4000**





1

 **GABRIEL**
ART. 28GA0209
GIACCA CHEF / CHEF JACKET
P.39



2

1 LONDRA
ART.28PZ0343
GREMBIULE UNISEX / UNISEX APRON

Tessuto / Fabric
100% Lino / Linen
240 gr/m²

Taglie / Sizes
UNICA / ONE SIZE
(h. 90)

Colori / Colours
Beige **7059**

 **Nuovo tessuto Lino 100%**
New fabric Linen 100%



2 JAMEY
ART.28PZ0308
GREMBIULE / APRON

Tessuto / Fabric
100% Cotone / Cotton
190 gr/m²

Taglie / Sizes
UNICA / ONE SIZE
(h. 96)

Colori / Colours
Gessato / Pin striped **8801**





Indossato dai concorrenti de "Il Ristorante degli Chef"

GREMBIULI / aprons



In collaborazione con lo Chef stellato Lorenzo Cogo



1

2

Realizzato in collaborazione con un professionista dell'alta cucina, lo Chef Lorenzo Cogo, il grembiule Chef non lascia nulla al caso.
Styled and designed thanks to the partnership with the top Chef Lorenzo Cogo, the Chef apron doesn't leave anything to chance.

Il grembiule Chef è ricco di dettagli e permette maggiore libertà di movimento rispetto alla tradizionale giacca.
The Chef apron has a lot of features that allow movements and activities better than the traditional chef jacket.

GREMBIULE CHEF

1 ART.28PZ0375/00-0819
GREMBIULE CHEF / CHEF APRON

Tessuto / Fabric
35% Cotone / Cotton
65% Poliestere / Polyester
195 gr/m²
Taglie / Sizes
UNICA / ONE SIZE
(h. 105)
Colori / Colours
Grigio / Grey 8054



2 ART.28PZ0375/00-0757 **NEW**
GREMBIULE CHEF / CHEF APRON

Tessuto / Fabric
55% Cotone / Cotton
42% Poliestere / Polyester
3% Elastan
160 gr/m²
Taglie / Sizes
UNICA / ONE SIZE
(h. 105)
Colori / Colours
Sabbia / Sand 7025



CARATTERISTICHE / FEATURE

- ▲ **Le bretelle offrono maggior comfort rispetto al tradizionale laccio che poggia sulla nuca**
The braces give more comfort compared with classic apron lace that lies on the nape.
- ▲ **Le bretelle sono regolabili e staccabili per i lavaggi**
Adjustable and removable braces
- ▲ **Ampia tasca a marsupio sul petto**
Wide breast pocket
- ▲ **Tasca frontale sulla pettorina con portapenne o pinze**
Breast pocket with pen or pliers holder
- ▲ **Tasconi**
Wide cargo pockets
- ▲ **Lacci per torcione**
Rag holder band
- ▲ **Piega frontale per libertà di movimento**
Front fold for best comfort
- ▲ **Cinturino regolabile sul retro con gancio**
Adjustable band on the backside
- ▲ **Doppio tessuto sulla pettorina per maggior protezione**
Double fabric layer on the bib for more safety



Guarda il video del grembiule Chef
Watch the video of Chef Apron

1



2



1 CIRO
ART.28PZ0399
GREMBIULE UNISEX CON PETTORINA / UNISEX BIB APRON

Tessuto / Fabric
100% Cotone / Cotton
190 gr/m²

Taglie / Sizes
UNICA / ONE SIZE
(h. 90 - larghezza pettorina 25)

Colori / Colours
Bianco / White **0001**

Nero / Black **8000**



2 AOSTA
ART.28PZ0006
GREMBIULE CON PETTORINA / UNISEX BIB APRON

Tessuto / Fabric
100% Cotone drill sanfor / Drill sanfor cotton
190 gr/m²

Taglie / Sizes
UNICA / ONE SIZE
(h. 84 - l. 64 - larghezza pettorina 24)

Colori / Colours
Bianco / White **0001**



1



2



1 GREMBIULE CERATO
ART.12PZO057

GREMBIULE CERATO UNISEX / UNISEX OILSKIN APRON

Tessuto / Fabric

80% PVC ignifugo / fireproof PVC
20% tessuto ignifugo garzato di poliestere / fireproof gauzed polyester fabric
320 gr/m²

Taglie / Sizes

UNICA / ONE SIZE

Colori / Colours

Bianco / White 0001 



PVC FODERSAN CIRÈ

Impermeabile, traspirante, resistente a oltre 100°C, anatomico, antistatico, ignifugo.
Waterproof, breathable, resistant over 100°C, antimicrobial, antistatic, fire retardant

2 TORINO
ART.28PZ0004

GREMBIULE / APRON

Tessuto / Fabric

100% Cotone drill sanfor / Drill sanfor cotton
190 gr/m²

Taglie / Sizes

UNICA / ONE SIZE
(h. 60 - l. 87)

Colori / Colours

Bianco / White 0001 





1

2

← TRINITY
ART. 28GA0243
GIACCA CHEF | CHEF JACKET
P. 25



Guarda il video
Watch the video

1 TRINITY
ART.28PA1114

PANTALONI CHEF / CHEF TROUSERS

Tessuto / Fabric

98% Cotone / Cotton
2% Elastan
245 gr/m²

Taglie / Sizes

I° 42-44-46 II° 48-50-52 III° 54-56-58

Colori / Colours

Pied de poule 8500



▶ **Tecnologia multisize
brevettata: 3 taglie in una**

Multisize patented technology: 3 sizes in one

▶ **Tessuto elasticizzato**

Stretch fabric

▶ **Sui fianchi scorrono le zip che
permettono di regolare la misura
in vita, sui fianchi e gambe**

Two zippers on sides to adjust
waist, hips and leg sizes

▶ **Sul davanti la misura si regola grazie
alle zip poste sopra alle tasche**

On the front the size is adjustable thanks
to the zipper above the pocket.

▶ **Sul retro due alamari regolabili in vita
in tre posizioni con bottone a pressione**

On the rear two frogging closures adjustable



2 CLEM
ART.28PA1118

PANTALONI CHEF / CHEF TROUSERS

Tessuto / Fabric

98% Cotone / Cotton
2% Elastan
245 gr/m²

Taglie / Sizes

XS - XXXL

Colori / Colours

Pied de poule 8500



▶ **Pantaloni unisex
con coulisse ed elastico**

Unisex trousers with coulisse
and elastic waist





1



3



2



JOSH

1 ART.28PA0879/00-0757 PANTALONI CHEF / CHEF TROUSERS

Tessuto / Fabric
55% Cotone / Cotton
42% Poliestere / Polyester
3% Elastan
160 gr/m²

Taglie / Sizes
XS - XXXL

Colori / Colours
Grigio / Grey **8057**

Tabacco / Tobacco **7061**

Con elastico e coulisse
With elastic waist and coulisse



2 ART.28PA0879/00-0014 PANTALONI CHEF / CHEF TROUSERS

Tessuto / Fabric
100% Cotone drill sanfor / Drill sanfor cotton
190 gr/m²

Taglie / Sizes
XS - XXXL

Colori / Colours
Bianco / White **0001**

Nero / Black **8000**

Blu / Blue **4000**

Con elastico e coulisse
With elastic waist and coulisse



3 ART.28PA0879/00-0647 PANTALONI CHEF / CHEF TROUSERS

Tessuto / Fabric
100% Cotone drill sanfor / Drill sanfor cotton
190 gr/m²

Taglie / Sizes
XS - XXXL

Colori / Colours
Pied de poule **8500**

Con elastico e coulisse
With elastic waist and coulisse





1



2



3

→ **ADRIAN**
ART. 28GA0193/00
GIACCA CHEF / CHEF JACKET
P.47

DENZEL

1 ART.28PA0881/00-0648 PANTALONI CHEF / CHEF TROUSERS

Tessuto / Fabric
100% Cotone / Cotton
190 gr/m²
Taglie / Sizes
40 - 64
Colori / Colours
Pied de poule **8500**

▲ **Ampia gamma taglie**
Wide size range



2 ART.28PA0881/00-0649 PANTALONI CHEF / CHEF TROUSERS

Tessuto / Fabric
100% Cotone / Cotton
190 gr/m²
Taglie / Sizes
40 - 64
Colori / Colours
Gessato / Pin striped **8801**

▲ **Ampia gamma taglie**
Wide size range



3 **AUSTIN** ART.28PA0928 PANTALONI CHEF / CHEF TROUSERS

Tessuto / Fabric
20% Cotone / Cotton
76% Poliestere / Polyester
4% Elastan
166 gr/m²
Taglie / Sizes
XS - XXXL
Colori / Colours
Tortora / Grey **7038**



▲ **Elastico in vita e coulisse**
Waist with elastic band and coulisse

▲ **Tascone laterale**
Side pocket





1

2

1 DERBY
ART.09PA0868
PANTALONI UNISEX / UNISEX TROUSERS

Tessuto / Fabric
100% Cotone / cotton
150 gr/m²

Taglie / Sizes
XS - XXL

Colori / Colours
Bianco / White **0001**

Grigio / Grey **8009**

Blu / Blue **4014**

Ampia gamma taglie
Wide size range



2 TIZIANO
ART.17PA0048
PANTALONI CHEF / CHEF TROUSERS

Tessuto / Fabric
100% Cotone drill sanfor / Drill sanfor cotton
190 gr/m²

Taglie / Sizes
40 - 64

Colori / Colours
Bianco / White **0001**

Ampia gamma taglie
Wide size range





1



2



1

MILANO
ART.17PA0047

PANTALONI CHEF UNISEX / UNISEX CHEF TROUSERS

Tessuto / Fabric
100% Cotone drill sanfor / Drill sanfor cotton
190 gr/m²

Taglie / Sizes
38 - 64

Colori / Colours

Bianco / White **0001**



Verde / Green **6000**



Azzurro / Azure **5027**



Ampia gamma taglie

Wide size range



2

LUCIANA
ART.28PA0085



PANTALONI CHEF / CHEF TROUSERS

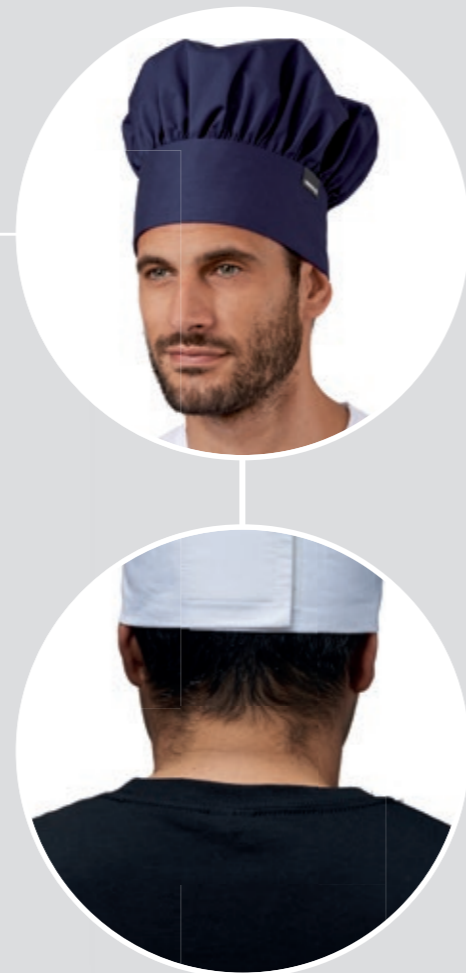
Tessuto / Fabric
96% Cotone / Cotton
4% Elastan
250 gr/m²

Taglie / Sizes
40 - 56

Colori / Colours

Bianco / White **0001**





JACK

**1 ART.28BE0008/00-0757
BERRETTO CHEF / CHEF HAT**

Tessuto / Fabric
55% Cotone / Cotton
42% Poliestere / Polyester
3% Elastan
160 gr/m²

Taglie / Sizes
UNICA / ONE SIZE

Colori / Colours
Grigio / Grey **8057**

Blu / Blue **4077**



**2 ART.28BE0008/00-9000
BERRETTO CHEF / CHEF HAT**

Tessuto / Fabric
100% Cotone / Cotton
140 gr/m²

Taglie / Sizes
UNICA / ONE SIZE

Colori / Colours
Bianco / White **0001**

Chiusura regolabile con velcro
Adjustable velcro closure





1



2



3



1 DEAN
ART.28BE0149

BERRETTO CHEF / CHEF HAT

Tessuto / Fabric
35% Cotone / Cotton
65% Poliestere / Polyester
130 gr/m²

Taglie / Sizes
UNICA / ONE SIZE

Colori / Colours
Bianco / White **0001**

Nero / Black **8000**



2 LINK
ART.28SE0183

BOTTONI / BUTTONS

Confezione da 10 pezzi
Packaging 10 pcs

3 MAX
ART.28FZ0001

FAZZOLETTO CUOCO / CHEF HANDKERCHIEF

Tessuto / Fabric
35% Cotone / Cotton
65% Poliestere / Polyester
130 gr/m²

Taglie / Sizes
UNICA / ONE SIZE

Colori / Colours
Bianco / White **0001**





1

2

3

4

1 JOE
ART.28BE0013
BERRETTO / CAP
 Tessuto / Fabric 35% Cotone / Cotton 65% Poliestere / Polyester 130 gr/m²
 Colori / Colours Bianco / White **0001** 
 Taglie / Sizes Unica / One size 

2 JERRY
ART.28BE0015
BUSTINA UOMO SENZA RETE / MAN CAP WITHOUT NET
 Tessuto / Fabric 35% Cotone / Cotton 65% Poliestere / Polyester 130 gr/m²
 Colori / Colours Bianco / White **0001** 
 Taglie / Sizes Unica / One size 
Confezione da 10 pezzi
 Packaging 10 pcs

3 TOM
ART.28BE0014
BUSTINA UOMO CON RETE / MAN CAP WITH NET
 Tessuto / Fabric 35% Cotone / Cotton 65% Poliestere / Polyester 130 gr/m²
 Colori / Colours Bianco / White **0001** 
 Taglie / Sizes Unica / One size 
Confezione da 10 pezzi
 Packaging 10 pcs

4 BRAD
ART.28BE0005
BERRETTO / CAP
 Tessuto / Fabric 100% Poliestere / Polyester 200 gr/m²
 Colori / Colours Nero / Black **8000** 
 Bordeaux **2009** 
 Taglie / Sizes I° - II° 
Antimacchia e ingualcibile
 Stain resistant, crease resistant



1



2



3



4

1 BILL
ART.28BE0006

BERRETTO / CAP

Tessuto / Fabric
35% Cotone / Cotton
65% Poliestere / Polyester
130 gr/m²

Colori / Colours
Bianco / White 0001 

Taglie / Sizes
Unica / One size



2 ALICE
ART.28CF0004

CUFFIA DONNA CON RETE / LADIES BONNET WITH NET

Tessuto / Fabric
35% Cotone / Cotton
65% Poliestere / Polyester
130 gr/m²

Colori / Colours
Bianco / White 0001 

Taglie / Sizes
Unica / One size



Confezioni da 10 pezzi
Packaging 10 pcs

3 HELEN
ART.28CF0005

CUFFIA DONNA SENZA RETE / LADIES BONNET WITHOUT NET

Tessuto / Fabric
35% Cotone / Cotton
65% Poliestere / Polyester
130 gr/m²

Colori / Colours
Bianco / White 0001 

Taglie / Sizes
Unica / One size



Confezioni da 10 pezzi
Packaging 10 pcs

4 TED
ART.28BE0012

BERRETTO / CAP

Tessuto / Fabric
35% Cotone / Cotton
65% Poliestere / Polyester
130 gr/m²

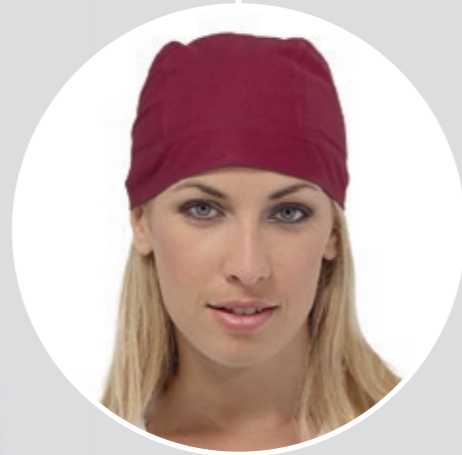
Colori / Colours
Bianco / White 0001 

Taglie / Sizes
Unica / One size





1



2



3

1 MARTIN
ART.28BE0017
BANDANA UNISEX / UNISEX BANDANA

Tessuto / Fabric
35% Cotone / Cotton
65% Poliestere / Polyester
130 gr/m²

Taglie / Sizes
UNICA / ONE SIZE

Colori / Colours
Bianco / White **0001**

Nero / Black **8000**

Marrone / Brown **7055**

Bordeaux **2038**

Beige **7057**



2 LIZ
ART.28BE0022
BANDANA CON FRONTALINO / BANDANA WHIT SUNSHIELD

Tessuto / Fabric
35% Cotone / Cotton
65% Poliestere / Polyester
130 gr/m²

Taglie / Sizes
UNICA / ONE SIZE

Colori / Colours
Bianco / White **0001**

Nero / Black **8000**

Giallo / Yellow **0021**

Verde / Green **6030**



3 ERIC
ART.28BE0176
BANDANA UNISEX / UNISEX BANDANA

Tessuto / Fabric
100% Cotone / Cotton
150 gr/m²

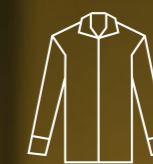
Taglie / Sizes
UNICA / ONE SIZE

Colori / Colours
Bianco / White **0001**





abito
suit
P.98



camicia uomo
man shirt
P.102



camicia donna
woman blouse
P.104



gilet
vest
P.114



pantaloni e gonne
trousers and skirts
P.116



accessori
accessories
P.120



1



1



1

2

2

2

1 DYLAN
ART.28GA0184/01

GIACCA UOMO / MEN JACKET

Tessuto / Fabric
90% Poliestere / Polyester
10% Viscosa / Viscose
175 gr/m²

Taglie / Sizes
42 - 60

Colori / Colours
Nero / Black **8000**



Grigio / Grey **8040**



Blu / Blue **4068**



Foderata

Lined

Taschino interno

Inside pocket



2 BARRY
ART.28PA0897/01

PANTALONI UOMO / MEN TROUSERS

Tessuto / Fabric
90% Poliestere / Polyester
10% Viscosa / Viscose
175 gr/m²

Taglie / Sizes
42 - 60

Colori / Colours
Nero / Black **8000**



Grigio / Grey **8040**



Blu / Blue **4068**





1



2



3

1 ALEXA
ART.28GA0185/01

GIACCA DONNA / WOMAN JACKET

Tessuto / Fabric
90% Poliestere / Polyester
10% Viscosa / Viscose
175 gr/m²

Taglie / Sizes
40 - 54

Colori / Colours

Nero / Black **8000**



Grigio / Grey **8040**



Blu / Blue **4068**



Foderata

Lined



2 ALISSA
ART.28PA0898/01

PANTALONI DONNA / WOMAN TROUSERS

Tessuto / Fabric
90% Poliestere / Polyester
10% Viscosa / Viscose
175 gr/m²

Taglie / Sizes
40 - 54

Colori / Colours

Nero / Black **8000**



Grigio / Grey **8040**



Blu / Blue **4068**



3 STELLA
ART.28GO0052

GONNA / SKIRT

Tessuto / Fabric
90% Poliestere / Polyester
10% Viscosa / Viscose
175 gr/m²

Taglie / Sizes
40 - 54

Colori / Colours

Nero / Black **8000**



Grigio / Grey **8040**



Blu / Blue **4068**



Foderata

Lined





HORECA / reception e sala *halls and attendants*

CAMICIA UOMO / *man shirt*

1



1 EVAN
ART.28CM0275

CAMICIA UOMO / MEN SHIRT

Tessuto / Fabric

97% Cotone / Cotton
3% Elastan
130 gr/m²

Taglie / Sizes

S - XXXL

Colori / Colours

Bianco / White **0001**



Nero / Black **8000**



Tabacco / Tobacco **7061**



Collo alla coreana

Korean neck



HORECA / reception e sala
hall and attendants



1



1 RUBINA
ART.28CM0281

CAMICIA DONNA / LADIES BLOUSE

Tessuto / Fabric

97% Cotone / Cotton
3% Elastan
130 gr/m²

Taglie / Sizes

XS - XXXL

Colori / Colours

Bianco / White **0001**



Nero / Black **8000**



Tabacco / Tobacco **7061**



Collo alla coreana

Korean neck





HORECA / reception e sala *halls and attendants*

CAMICIA UOMO / *man shirt*



HORECA / reception e sala
hall and attendants



1 JAMES
ART.28CM0256

CAMICIA UOMO / MEN SHIRT

Tessuto / Fabric

97% Cotone / Cotton
3% Elastan
130 gr/m²

Taglie / Sizes

S - XXXL

Colori / Colours

Bianco / White **0001**



Nero / Black **8000**



Tabacco / Tobacco **7061**



Azzurro / Azure **5071**



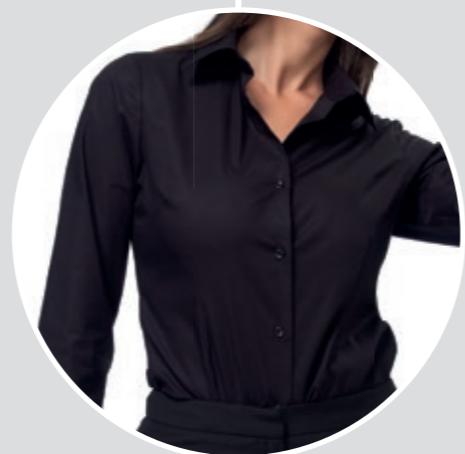


HORECA / reception e sala *halls and attendants*

CAMICIA DONNA / *woman blouse*



1



1 LISA
ART.28CM0164

CAMICIA DONNA / WOMAN BLOUSE

Tessuto / Fabric

97% Cotone / Cotton
3% Elastan
130 gr/m²

Taglie / Sizes

XS - XXXL

Colori / Colours

Bianco / White **0001**



Nero / Black **8000**



Tabacco / Tobacco **7061**



Azzurro / Azure **5071**





→ **GEORGE**
ART. 28CV0001
PAPILLON / BOW TIE
P. 123

MASSIMO

1 ART.28CM0161/00-9020
CAMICIA UOMO / MEN SHIRT

Tessuto / Fabric
35% Cotone / Cotton
65% Poliestere / Polyester
130 gr/m²

Taglie / Sizes
XS - XXXL

Colori / Colours
Bianco / White **0001**

Nero / Black **8000**

▶ **irrestringibile**
Unshrinkable

▶ **Taschino petto sinistro**
Breast pocket



2 ART.28CM0161/00-9000
CAMICIA UOMO / MEN SHIRT

Tessuto / Fabric
100% Cotone / Cotton
120 gr/m²

Taglie / Sizes
XS - XXXL

Colori / Colours
Bianco / White **0001**

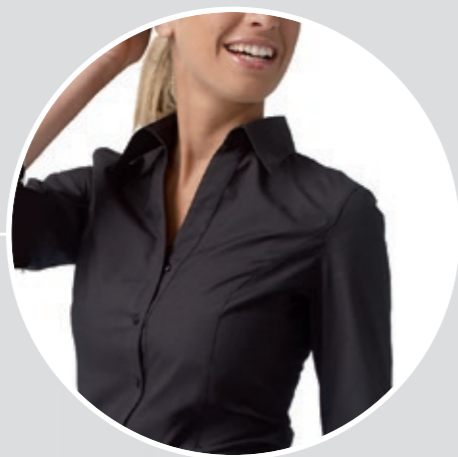
▶ **Popeline irrestringibile**
Unshrinkable popeline

▶ **Taschino petto sinistro**
Breast pocket





1



2



3



1 MARIA
ART.28CM0162

CAMICIA DONNA / WOMAN BLOUSE

Tessuto / Fabric
35% Cotone / Cotton
65% Poliestere / Polyester
130 gr/m²

Taglie / Sizes
S - XXXL

Colori / Colours
Bianco / White **0001**

Nero / Black **8000**

Irrestringibile
Unshrinkable



2 MARTA
ART.28CM0163

CAMICIA DONNA / WOMAN BLOUSE

Tessuto / Fabric
100% Cotone / Cotton
120 gr/m²

Taglie / Sizes
XS - XXXL

Colori / Colours
Bianco / White **0001**

Popeline irrestringibile
Unshrinkable popeline



3 BARBARA
ART.28CM0165

CAMICIA DONNA / WOMAN BLOUSE

Tessuto / Fabric
97% Cotone / Cotton
3% Elastan
130 gr/m²

Taglie / Sizes
S - XXL

Colori / Colours
Bianco / White **0001**

Popeline elasticizzato
Stretch popeline





→ **GEORGE**
ART. 28CV0001
PAPILLON / BOW TIE
P.123



1 **STEFANO**
ART.28GT0010

GILET UOMO / MEN VEST

Tessuto / Fabric
100% Poliestere / Polyester
200 gr/m²

Taglie / Sizes
S - XXL

Colori / Colours
Nero / Black **8000**

Bordeaux **2009**

▲ **Antimacchia e ingualcibile**
Stain resistant, crease resistant



2 **MARION**
ART.28GT0089

GILET DONNA LUNGO / WOMAN LONG VEST

Tessuto / Fabric
100% Poliestere / Polyester
200 gr/m²

Taglie / Sizes
S - XXL

Colori / Colours
Nero / Black **8000**

Bordeaux **2009**

▲ **Antimacchia e ingualcibile**
Stain resistant, crease resistant



3 **MIRELLA**
ART.28GT0012

GILET DONNA / WOMAN VEST

Tessuto / Fabric
100% Poliestere / Polyester
200 gr/m²

Taglie / Sizes
S - XXL

Colori / Colours
Nero / Black **8000**

Bordeaux **2009**

▲ **Antimacchia e ingualcibile**
Stain resistant, crease resistant





1

→ **MASSIMO**
ART. 28CM0161
CAMICIA UOMO / MEN SHIRT
P. 111



2

1 LUISA
ART.28G00041

GONNA / SKIRT

Tessuto / Fabric
100% Poliestere / Polyester
200 gr/m²

Taglie / Sizes
40 - 56

Colori / Colours
Nero / Black **8000**

▲ **Antimacchia e ingualcibile**

Stain resistant, crease resistant



2 EDOARDO
ART.28PA0206

PANTALONI UOMO / MAN TROUSERS

Tessuto / Fabric
100% Poliestere / Polyester
180 gr/m²

Taglie / Sizes
40 - 60

Colori / Colours
Nero / Black **8000**

▲ **Ampia gamma di taglie**

Wide size range

▲ **Antimacchia e ingualcibile**

Stain resistant, crease resistant





1



2

1 SUSANNE
ART.28PA0788

PANTALONI DONNA / WOMAN TROUSERS

Tessuto / Fabric
100% Poliestere / Polyester
180 gr/m²

Taglie / Sizes
38 - 56

Colori / Colours
Nero / Black **8000**

Antimacchia e ingualcibile
Stain resistant, crease resistant



2 PAOLA
ART.28PA0054

PANTALONI DONNA / WOMAN TROUSERS

Tessuto / Fabric
100% Poliestere / Polyester
180 gr/m²

Taglie / Sizes
38 - 56

Colori / Colours
Nero / Black **8000**

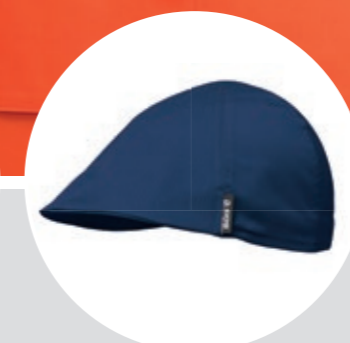
Antimacchia e ingualcibile
Stain resistant, crease resistant



1



2



1 JODY
ART.28BE0204

NEW

BERRETTO / CAP

Tessuto / Fabric
100% Poliestere / Polyester
150 gr/m²

Taglie / Sizes
UNICA / ONE SIZE

Colori / Colours

Giallo ocra / Ocra Yellow **0042**

Blu / Blue **4076**

Turchese / Turquoise **5090**

Verde / Green **6099**

Nero / Black **8000**

Grigio / Grey **8066**



2 KYLE
ART.28BE0205

NEW

BERRETTO / CAP

Tessuto / Fabric
35% Cotone / Cotton
65% Poliestere / Polyester
195 gr/m²

Taglie / Sizes
UNICA / ONE SIZE

Colori / Colours

Giallo / Yellow **0031**

Arancio / Orange **1013**

Blu / Blue **4015**

Nero / Black **8000**

Grigio / Grey **8067**



↑ **DEVON - FRANKIE**
GREMBIULE / APRON
P. 141

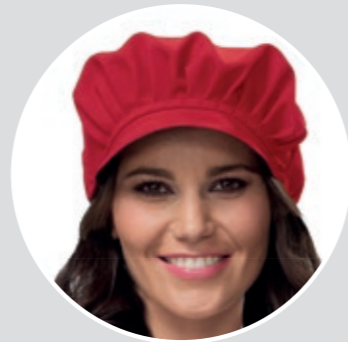
↑ **ASH - EDDIE - BOBBY - KIT**
GREMBIULE / APRON
P. 131 - 139



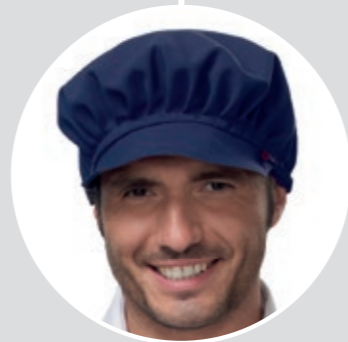
1



2



3



HOLLY

1 ART.28BE0156/OO-0111

BERRETTO / CAP

Tessuto / Fabric
100% Poliestere / Polyester
200 gr/m²

Taglie / Sizes
UNICA / ONE SIZE

Colori / Colours
Marrone / Brown **7034**

Grigio / Grey **8029**

Sabbia / Sand **7025**

Nero / Black **8000**

Bordeaux **2009**



2 ART.28BE0156/OO-0819

BERRETTO / CAP

Tessuto / Fabric
35% Cotone / Cotton
65% Poliestere / Polyester
195 gr/m²

Taglie / Sizes
UNICA / ONE SIZE

Colori / Colours
Blu / Blue **4015**

Rosso / Red **2007**



3 **GEORGE**
ART.28CV0001

PAPILLON / BOW TIE

Tessuto / Fabric
100% Poliestere / Polyester
200 gr/m²

Taglie / Sizes
UNICA / ONE SIZE

Colori / Colours
Nero / Black **8000**

Bordeaux **2009**





1



2



1 GINNY
ART.28CV0017
CRAVATTINO UNISEX / UNISEX NECKTIE

Tessuto / Fabric
100% Poliestere / Polyester
200 gr/m²

Taglie / Sizes
UNICA / ONE SIZE

Colori / Colours
Marrone / Brown **7034**

Sabbia / Sand **7025**

Nero / Black **8000**

Bordeaux **2009**



2 ALVIN
ART.28CV0018
CRAVATTA / TIE

Tessuto / Fabric
90% Poliestere / Polyester
10% Viscosa / Viscose
175 gr/m²

Taglie / Sizes
UNICA / ONE SIZE

Colori / Colours
Nero / Black **8000**

Grigio / Grey **8040**

Blu / Blue **4068**





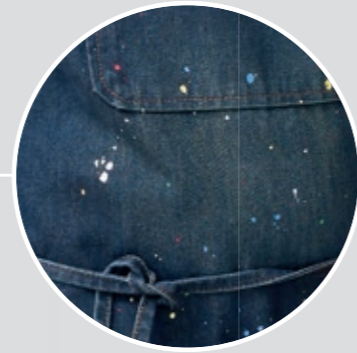
SIGGI HORECA

Grembiuli

Aprons



In collaborazione con
lo Chef stellato Lorenzo Cogo



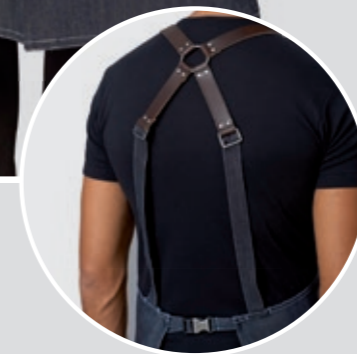
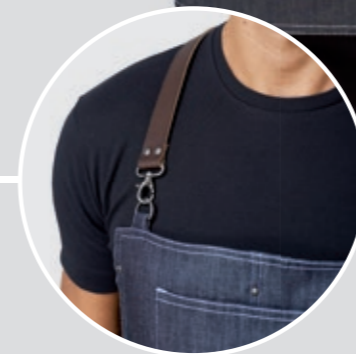
▶ Ogni capo è unico per la casualità effetto spruzzo di colore

Each garments is unique and different for the casual spurts



Indossato dai concorrenti de "Il Ristorante degli Chef"

2



1 DUBLIN
ART.20PZO434
GREMBIULE / APRON

NEW

Tessuto / Fabric
95% Cotone / Cotton
5% Viscosa / Viscose
300 gr/m² / 11 oz

Taglie / Sizes
UNICA / ONE SIZE
(h. 97)

Colori / Colours
Jeans / Jeans 4081

CARATTERISTICHE / FEATURE

▶ Laccio regolabile sul retro con gancio

Adjustable neck lace

▶ Travetto e cucitura a contrasto

Color contrast seams and bartacks



2 BISTRO
ART.28PZO374
GREMBIULE BISTRO / BISTRO APRON

Tessuto / Fabric
100% Cotone / Cotton
365 gr/m² / 12 oz

Taglie / Sizes
UNICA / ONE SIZE
(h. 111)

Colori / Colours
Jeans / Jeans 4021

CARATTERISTICHE / FEATURE

▶ Le bretelle offrono maggior comfort rispetto al tradizionale laccio che poggia sulla nuca

The braces give more comfort compared with classic apron lace that lies on the nape.

▶ Bretelle in cuoio regolabili e staccabili per i lavaggi

Adjustable and removable leather braces

▶ Ampia tasca a marsupio sul petto

Wide breast pocket

▶ Tasconi

Wide cargo pockets

▶ Piegua frontale per libertà di movimento

Front fold for best comfort

▶ Cinturino regolabile sul retro con gancio

Adjustable band on the backside





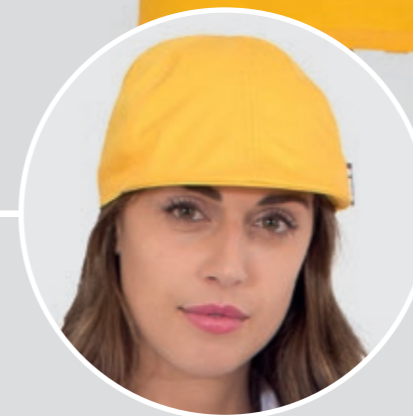
1



2



3



↑ KYLE
ART. 28BE0205
BERRETTO / CAP
P. 121

1 ASH
ART.28PZO453 **NEW**
GREMBIULE CON PETTORINA UNISEX / UNISEX BIB APRON

Tessuto / Fabric
35% Cotone / Cotton
65% Poliestere / Polyester
195 gr/m²

Taglie / Sizes
UNICA / ONE SIZE
(h. 95,5)

Colori / Colours
Giallo / Yellow **0031**



Arancione / Orange **1013**



Blu / Blue **4015**



Nero / Black **8000**



2 EDDIE
ART.28PZO450 **NEW**
GREMBIULE LUNGO UNISEX / UNISEX LONG APRON

Tessuto / Fabric
35% Cotone / Cotton
65% Poliestere / Polyester
195 gr/m²

Taglie / Sizes
UNICA / ONE SIZE
(h. 70)

Colori / Colours
Giallo / Yellow **0031**



Arancione / Orange **1013**



Blu / Blue **4015**



Nero / Black **8000**



3 BOBBY
ART.28PZO451 **NEW**
GREMBIULE UNISEX / UNISEX APRON

Tessuto / Fabric
35% Cotone / Cotton
65% Poliestere / Polyester
195 gr/m²

Taglie / Sizes
UNICA / ONE SIZE
(h. 43,5)

Colori / Colours
Giallo / Yellow **0031**



Arancione / Orange **1013**



Blu / Blue **4015**



Nero / Black **8000**





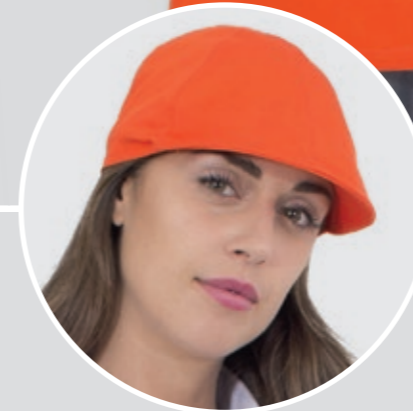
1



2



3



↑ KYLE
ART. 28BE0205
BERRETTO / CAP
P.121

1 ASH
ART.28PZO453 NEW
GREMBIULE CON PETTORINA UNISEX / UNISEX BIB APRON

Tessuto / Fabric
35% Cotone / Cotton
65% Poliestere / Polyester
195 gr/m²

Taglie / Sizes
UNICA / ONE SIZE
(h. 95,5)

Colori / Colours
Giallo / Yellow 0031



Arancione / Orange 1013



Blu / Blue 4015



Nero / Black 8000



2 EDDIE
ART.28PZO450 NEW
GREMBIULE LUNGO UNISEX / UNISEX LONG APRON

Tessuto / Fabric
35% Cotone / Cotton
65% Poliestere / Polyester
195 gr/m²

Taglie / Sizes
UNICA / ONE SIZE
(h. 70)

Colori / Colours
Giallo / Yellow 0031



Arancione / Orange 1013



Blu / Blue 4015



Nero / Black 8000



3 BOBBY
ART.28PZO451 NEW
GREMBIULE UNISEX / UNISEX APRON

Tessuto / Fabric
35% Cotone / Cotton
65% Poliestere / Polyester
195 gr/m²

Taglie / Sizes
UNICA / ONE SIZE
(h. 43,5)

Colori / Colours
Giallo / Yellow 0031



Arancione / Orange 1013



Blu / Blue 4015



Nero / Black 8000





1



2



3



↑ KYLE
ART. 28BE0205
BERRETTO / CAP
P.121

1 ASH
ART.28PZO453 **NEW**
GREMBIULE CON PETTORINA UNISEX / UNISEX BIB APRON

Tessuto / Fabric
35% Cotone / Cotton
65% Poliestere / Polyester
195 gr/m²

Taglie / Sizes
UNICA / ONE SIZE
(h. 95,5)

Colori / Colours
Giallo / Yellow 0031

Arancione / Orange 1013

Blu / Blue 4015

Nero / Black 8000



2 EDDIE
ART.28PZO450 **NEW**
GREMBIULE LUNGO UNISEX / UNISEX LONG APRON

Tessuto / Fabric
35% Cotone / Cotton
65% Poliestere / Polyester
195 gr/m²

Taglie / Sizes
UNICA / ONE SIZE
(h. 70)

Colori / Colours
Giallo / Yellow 0031

Arancione / Orange 1013

Blu / Blue 4015

Nero / Black 8000



3 BOBBY
ART.28PZO451 **NEW**
GREMBIULE UNISEX / UNISEX APRON

Tessuto / Fabric
35% Cotone / Cotton
65% Poliestere / Polyester
195 gr/m²

Taglie / Sizes
UNICA / ONE SIZE
(h. 43,5)

Colori / Colours
Giallo / Yellow 0031

Arancione / Orange 1013

Blu / Blue 4015

Nero / Black 8000





1



2



3



↑ KYLE
ART. 28BE0205
BERRETTO / CAP
P. 121

1 ASH
ART.28PZO453 **NEW**
GREMBIULE CON PETTORINA UNISEX / UNISEX BIB APRON

Tessuto / Fabric
35% Cotone / Cotton
65% Poliestere / Polyester
195 gr/m²

Taglie / Sizes
UNICA / ONE SIZE
(h. 95,5)

Colori / Colours
Giallo / Yellow **0031**



Arancione / Orange **1013**



Blu / Blue **4015**



Nero / Black **8000**



2 EDDIE
ART.28PZO450 **NEW**
GREMBIULE LUNGO UNISEX / UNISEX LONG APRON

Tessuto / Fabric
35% Cotone / Cotton
65% Poliestere / Polyester
195 gr/m²

Taglie / Sizes
UNICA / ONE SIZE
(h. 70)

Colori / Colours
Giallo / Yellow **0031**



Arancione / Orange **1013**



Blu / Blue **4015**



Nero / Black **8000**



3 BOBBY
ART.28PZO451 **NEW**
GREMBIULE UNISEX / UNISEX APRON

Tessuto / Fabric
35% Cotone / Cotton
65% Poliestere / Polyester
195 gr/m²

Taglie / Sizes
UNICA / ONE SIZE
(h. 43,5)

Colori / Colours
Giallo / Yellow **0031**



Arancione / Orange **1013**



Blu / Blue **4015**



Nero / Black **8000**





NEW



1



1

KIT

ART.28PZO461

NEW

GREMBIULE CON PETTORINA UNISEX / UNISEX BIB APRON

Tessuto / Fabric

35% Cotone / Cotton
65% Poliestere / Polyester
195 gr/m²

Taglie / Sizes

UNICA / ONE SIZE
(h. 93,5)

Colori / Colours

Giallo / Yellow 0031



Blu / Blu 4015



Nero / Black 8000



Grigio / Grey 8067

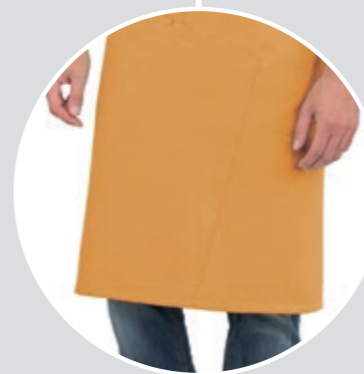
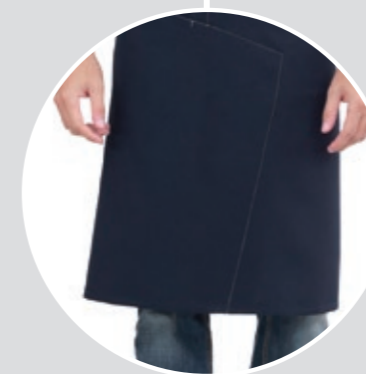
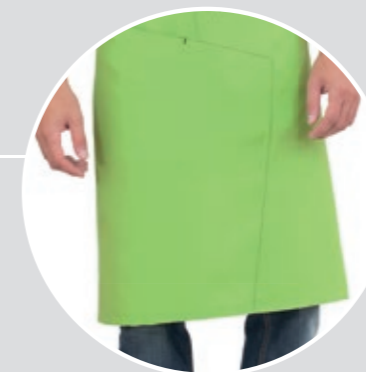




1



2



← JODY
ART. 28BE0204
BERRETTO / CAP
P. 120

1 DEVON
ART.28PZO460
GREMBIULE UNISEX / UNISEX APRON

NEW

Tessuto / Fabric
100% Poliestere / Polyester
150 gr/m²

Taglie / Sizes
UNICA / ONE SIZE
(h. 41,5)

Colori / Colours

- Giallo ocra / Ocra Yellow 0042 
- Blu / Blue 4076 
- Turchese / Turquoise 5090 
- Verde / Green 6099 
- Nero / Black 8000 
- Grigio / Grey 8066 



2 FRANKIE
ART.28PZO458
GREMBIULE CON PETTORINA UNISEX / UNISEX BIB APRON

NEW

Tessuto / Fabric
100% Poliestere / Polyester
150 gr/m²

Taglie / Sizes
UNICA / ONE SIZE
(h. 95)

Colori / Colours

- Giallo ocra / Ocra Yellow 0042 
- Blu / Blue 4076 
- Turchese / Turquoise 5090 
- Verde / Green 6099 
- Nero / Black 8000 
- Grigio / Grey 8066 





1



2



3



1 ROCCO
ART.28PZ0378
GREMBIULE CON PETTORINA UNISEX / UNISEX BIB APRON

Tessuto / Fabric
15% Cotone / Cotton
85% Poliestere / Polyester
220 gr/m²

Taglie / Sizes
UNICA / ONE SIZE
(h. 89)

Colori / Colours
Grigio-Nero / Grey-Black 9587
Grigio Chiaro-Scuro / Gray Light-Dark 9586
Ecrù-Marrone / Ecrù-Brown 9588



2 MIRIA
ART.28PZ0392
GREMBIULE DONNA CON PETTORINA / LADIES BIB APRON

Tessuto / Fabric
35% Cotone / Cotton
65% Poliestere / Polyester
195 gr/m²

Taglie / Sizes
UNICA / ONE SIZE
(h. 71)

Colori / Colours
Nero-Grigio / Black-Grey 9587
Ecrù-Marrone / Ecrù-Brown 9591



3 NOÈ
ART.28PZ0379
GREMBIULE UNISEX / UNISEX APRON

Tessuto / Fabric
35% Cotone / Cotton
65% Poliestere / Polyester
195 gr/m²

Taglie / Sizes
UNICA / ONE SIZE
(h. 42)

Colori / Colours
Nero-Grigio / Black-Grey 9592
Blu-Ecrù / Blue-Ecrù 9590
Ecrù-Marrone / Ecrù-Brown 9591





1



2



3

1 ROCCO
ART.28PZ0378
GREMBIULE CON PETTORINA UNISEX / UNISEX BIB APRON

Tessuto / Fabric
15% Cotone / Cotton
85% Poliestere / Polyester
220 gr/m²

Taglie / Sizes
UNICA / ONE SIZE
(h. 89)

Colori / Colours
Grigio-Nero / Grey-Black 9587

Grigio Chiaro-Scuro / Gray Light-Dark 9586

Ecrù-Marrone / Ecrù-Brown 9588



2 MIRIA
ART.28PZ0392
GREMBIULE DONNA CON PETTORINA / LADIES BIB APRON

Tessuto / Fabric
35% Cotone / Cotton
65% Poliestere / Polyester
195 gr/m²

Taglie / Sizes
UNICA / ONE SIZE
(h. 71)

Colori / Colours
Nero-Grigio / Black-Grey 9587

Ecrù-Marrone / Ecrù-Brown 9591



1 NOÈ
ART.28PZ0379
GREMBIULE UNISEX / UNISEX APRON

Tessuto / Fabric
35% Cotone / Cotton
65% Poliestere / Polyester
195 gr/m²

Taglie / Sizes
UNICA / ONE SIZE
(h. 42)

Colori / Colours
Nero-Grigio / Black-Grey 9592

Blu-Ecrù / Blue-Ecrù 9590

Ecrù-Marrone / Ecrù-Brown 9591





1



2



1 MAYA
ART.28PZ0382
GREMBIULE DONNA / LADIES APRON

Tessuto / Fabric
35% Cotone / Cotton
65% Poliestere / Polyester
195 gr/m²

Taglie / Sizes
UNICA / ONE SIZE
(h. 61)

Colori / Colours
Blu / Blue **4015**

Rosso / Red **2007**

Marrone / Brown **7062**

Nero / Black **8000**



2 RAMON
ART.28PZ0381
GREMBIULE CON PETTORINA UNISEX / UNISEX BIB APRON

Tessuto / Fabric
35% Cotone / Cotton
65% Poliestere / Polyester
195 gr/m²

Taglie / Sizes
UNICA / ONE SIZE
(h. 92)

Colori / Colours
Blu / Blue **4015**

Rosso / Red **2007**

Marrone / Brown **7062**

Nero / Black **8000**





1

1 ELIA
ART.28PZ0387

GREMBIULE CON PETTORINA UNISEX / UNISEX BIB APRON

Tessuto / Fabric
35% Cotone / Cotton
65% Poliestere / Polyester
195 gr/m²

Taglie / Sizes
UNICA / ONE SIZE
(h. 95)

Colori / Colours
Bianco / White **0001**



Nero / Black **8000**



Grigio / Grey **8054**



▲ **Lacci regolabili incrociati sul retro**
Adjustable laces on the backside

▲ **Porta torcione**
Rag holder band





1

1 PRISCO
ART.28PZ0380

GREMBIULE CON PETTORINA UNISEX / UNISEX BIB APRON

Tessuto / Fabric
35% Cotone / Cotton
65% Poliestere / Polyester
195 gr/m²

Taglie / Sizes
UNICA / ONE SIZE
(h. 96)

Colori / Colours
Blu / Blue **4015**

Grigio / Grey **8055**

Rosso / Red **2007**

Verde / Green **6093**

Nero / Black **8000**





1



1 RAOUL
ART.28PZO393

GREMBIULE CON PETTORINA UNISEX / UNISEX BIB APRON

Tessuto / Fabric
100% Poliestere / Polyester
220 gr/m²

Taglie / Sizes
UNICA / ONE SIZE
(h. 90)

Colori / Colours

Nero / Black **8000**



Marrone / Brown **7034**



Grigio / Grey **8029**



Bordeaux **2009**



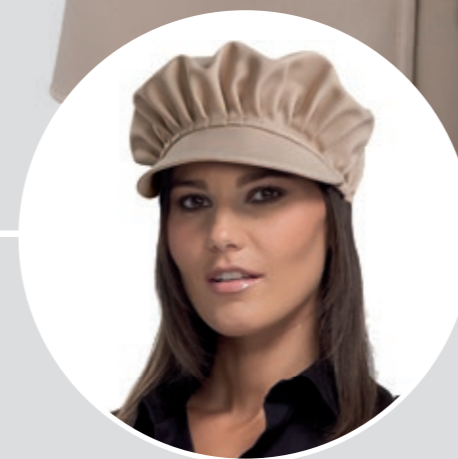
Antimacchia e ingualcibile


Stain resistant, crease resistant



Lacci regolabili a scorrimento

Adjustable sliding laces



 **HOLLY**
ART. 28BE0156
BERRETTO / CAP
P. 123

1 ELWOOD
ART.28PZ0321

GREMBIULE CON PETTORINA UNISEX / UNISEX BIB APRON

Tessuto / Fabric
100% Poliestere / Polyester
200 gr/m²

Taglie / Sizes
UNICA / ONE SIZE
(h. 85)

Colori / Colours
Grigio / Grey **8029**

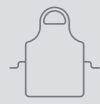
Sabbia / Sand **7025**

Marrone / Brown **7034**



Antimacchia e ingualcibile
Stain resistant, crease resistant





1

2



3

1 NAPOLI
ART.28PZ0013
GREMBIULE LUNGO UNISEX / UNISEX LONG APRON

Tessuto / Fabric
100% Poliestere / Polyester
200 gr/m²

Taglie / Sizes
UNICA / ONE SIZE
(h. 94 - l. 98)

Colori / Colours

Nero / Black **8000**



Bordeaux **2009**



Grigio / Grey **8029**



Sabbia / Sand **7025**



Marrone / Brown **7034**



Verde / Green **6087**



Antimacchia e ingualcibile
Stain resistant, crease resistant



2 ANCONA
ART.28PZ0014
GREMBIULE UNISEX / UNISEX APRON

Tessuto / Fabric
100% Poliestere / Polyester
200 gr/m²

Taglie / Sizes
UNICA / ONE SIZE
(h. 69 - l. 98)

Colori / Colours

Nero / Black **8000**



Bordeaux **2009**



Grigio / Grey **8029**



Sabbia / Sand **7025**



Marrone / Brown **7034**



Antimacchia e ingualcibile
Stain resistant, crease resistant



3 LONDRA
ART.28PZ0343
GREMBIULE UNISEX / UNISEX APRON

Tessuto / Fabric
100% Lino / Linen
240 gr/m²

Taglie / Sizes
UNICA / ONE SIZE
(h. 90)

Colori / Colours

Beige **7059**





1 PALERMO
ART.28PZ0015

GREMBIULE UNISEX / UNISEX APRON

Tessuto / Fabric
100% Poliestere / Polyester
200 gr/m²

Taglie / Sizes
UNICA / ONE SIZE
(h. 43 - l. 86)

Colori / Colours
Bianco / White **0001**

Nero / Black **8000**

Bordeaux **2009**

Verde / Green **6087**

Grigio / Grey **8029**

Sabbia / Sand **7025**



Antimacchia e ingualcibile
Stain resistant, crease resistant



2 COMO
ART.28PZ0016

GREMBIULE UNISEX / UNISEX APRON

Tessuto / Fabric
100% Poliestere / Polyester
200 gr/m²

Taglie / Sizes
UNICA / ONE SIZE
(h. 30 - l. 68)

Colori / Colours
Nero / Black **8000**

Bordeaux **2009**

Grigio / Grey **8029**



Antimacchia e ingualcibile
Stain resistant, crease resistant



1

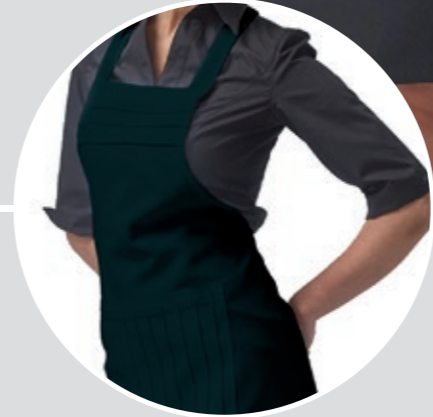
2



1



2



1 AURORA
ART.28PZ0345
GREMBIULE CON PETTORINA DONNA / LADIES BIB APRON

Tessuto / Fabric
100% Poliestere / Polyester
200 gr/m²

Taglie / Sizes
UNICA / ONE SIZE
(h. 66)

Colori / Colours
Verde / Green **6087**



Grigio / Grey **8029**



Marrone / Brown **7034**



Sabbia / Sand **7025**



Antimacchia e ingualcibile
Stain resistant, crease resistant



2 MICHELA
ART.28PZ0189
GREMBIULE CON PETTORINA DONNA / LADIES BIB APRON

Tessuto / Fabric
100% Poliestere / Polyester
180 gr/m²

Taglie / Sizes
UNICA / ONE SIZE
(h. 61 - l. 84)

Colori / Colours
Bianco / White **0001**



Nero / Black **8000**



Fucsia / fuchsia **3010**



Verde / Green **6053**



Antimacchia e ingualcibile
Stain resistant, crease resistant





AURA

1 ART.28PZO385/00-0792 GREMBIULE CON PETTORINA DONNA / LADIES BIB APRON

Tessuto / Fabric
100% Poliestere / Polyester
220 gr/m²

Taglie / Sizes
UNICA / ONE SIZE

Colori / Colours
Bordeaux **2009**

Grigio / Grey **8029**

Marrone / Brown **7034**



2 ART.28PZO385/00-0111 GREMBIULE CON PETTORINA DONNA / LADIES BIB APRON

Tessuto / Fabric
100% Poliestere / Polyester
180 gr/m²

Taglie / Sizes
UNICA / ONE SIZE

Colori / Colours
Verde / Green **6053**

Antimacchia e ingualcibile
Stain resistant, crease resistant



3 MAICA ART.28PZO383 GREMBIULE DONNA / LADIES APRON

Tessuto / Fabric
100% Poliestere / Polyester
220 gr/m²

Taglie / Sizes
UNICA / ONE SIZE
(h. 40)

Colori / Colours
Grigio / Grey **8029**

Nero / Black **8000**

Antimacchia e ingualcibile
Stain resistant, crease resistant





1

1 LYNN

ART.28PZO462

NEW

GREMBIULE CON PETTORINA UNISEX / UNISEX BIB APRON

Tessuto / Fabric

100% Poliestere / Polyester
150 gr/m²

Taglie / Sizes

UNICA / ONE SIZE
(h. 90,5 da scollatura / from V neck)

Colori / Colours

Blu / Blu 4076



Nero / Black 8000



Grigio / Grey 8066





1

2

3

1 DIEGO
ART.28PZO397

GREMBIULE UOMO / MEN APRON

Tessuto / Fabric
100% Poliestere / Polyester
220 gr/m²

Taglie / Sizes
UNICA / ONE SIZE
(h. 97)

Colori / Colours
Nero / Black **8000**



Antimacchia e ingualcibile
Stain resistant, crease resistant



2 SVEVA
ART.28PZO398

GREMBIULE DONNA CON PETTORINA / LADIES BIB APRON

Tessuto / Fabric
100% Poliestere / Polyester
220 gr/m²

Taglie / Sizes
UNICA / ONE SIZE
(h. 76)

Colori / Colours
Nero / Black **8000**



3 NADIA
ART.28PZO233

GREMBIULE DONNA CON PETTORINA / LADIES BIB APRON

Tessuto / Fabric
100% Poliestere / Polyester
200 gr/m²

Taglie / Sizes
UNICA / ONE SIZE
(h. 62)

Colori / Colours
Nero / Black **8000**



Bordeaux **2009**



Antimacchia e ingualcibile
Stain resistant, crease resistant





1



2



3

1 BARI
ART.28PZ0012

GREMBIULE CON PETTORINA UNISEX / UNISEX BIB APRON

Tessuto / Fabric
100% Poliestere / Polyester
200 gr/m²

Taglie / Sizes
UNICA / ONE SIZE
(h. 95)

Colori / Colours
Nero / Black **8000**

Bordeaux **2009**

Antimacchia e ingualcibile
Stain resistant, crease resistant



2 TRIESTE
ART.28PZ0009

GREMBIULE CON PETTORINA UNISEX / UNISEX BIB APRON

Tessuto / Fabric
100% Poliestere / Polyester
200 gr/m²

Taglie / Sizes
UNICA / ONE SIZE
(h. 79)

Colori / Colours
Nero / Black **8000**

Antimacchia e ingualcibile
Stain resistant, crease resistant



3 ROMA
ART.28PZ0011

GREMBIULE CON PETTORINA UNISEX / UNISEX BIB APRON

Tessuto / Fabric
100% Poliestere / Polyester
200 gr/m²

Taglie / Sizes
UNICA / ONE SIZE
(h. 85)

Colori / Colours
Nero / Black **8000**

Antimacchia e ingualcibile
Stain resistant, crease resistant





1 BOLOGNA
ART.28PZ0010

GREMBIULE CON PETTORINA UNISEX / UNISEX BIB APRON

Tessuto / Fabric
100% Poliestere / Polyester
200 gr/m²

Taglie / Sizes
UNICA / ONE SIZE

Colori / Colours
Nero-Grigio / Black-Grey **8000**

Bordeaux-Nero / Bordeaux-Black **2009**

Antimacchia e ingualcibile
Stain resistant, crease resistant





1



2



1 BYRON
ART.28PZO409

GREMBIULE CON PETTORINA UNISEX / UNISEX BIB APRON

Tessuto / Fabric
100% Poliestere / Polyester
220 gr/m²

Taglie / Sizes
UNICA / ONE SIZE
(h. 85)

Colori / Colours
Nero / Black **8000**

Marrone / Brown **7034**



Antimacchia e ingualcibile
Stain resistant, crease resistant



2 JAMEY
ART.28PZO308

GREMBIULE / APRON

Tessuto / Fabric
100% Cotone / Cotton
190 gr/m²

Taglie / Sizes
UNICA / ONE SIZE
(h. 96)

Colori / Colours
Gessato / Pin striped **8801**





1



2



1 **TREVISO**
ART.28SE0255
GREMBIULE UNISEX / UNISEX APRON

Tessuto / Fabric
35% Cotone / Cotton
65% Poliestere / Polyester
130 gr/m²

Taglie / Sizes
UNICA / ONE SIZE
(h. 84)

Colori / Colours
Nero / Black **8000**

Rosso / Red **2005**

Verde / Green **6031**

Bluette / Light blue **4028**



Confezione da 5 pezzi
Packaging 5 pcs



2 **CIRO**
ART.28PZ0399
GREMBIULE UNISEX / UNISEX APRON

Tessuto / Fabric
100% Cotone / Cotton
190 gr/m²

Taglie / Sizes
UNICA / ONE SIZE
(h. 90 - larghezza pettorina 25)

Colori / Colours
Bianco / White **0001**

Nero / Black **8000**





SIGGI HORECA

Maglieria e underwear

t-shirt, polos and underwear



t-shirt

P.178



polo
polo shirt

P.180



underwear

P.182



socks

P.183



PARIS
ART.20MA0003

T-SHIRT

Tessuto / Fabric
100% Cotone mercerizzato / mercerized cotton
140 gr/m²

Taglie / Sizes
S-3XL

Colori / Colours
Bianco / White **0001**



Blu / Blue **4034**



ISCHIA
ART.20MA0004

T-SHIRT

Tessuto / Fabric
100% Cotone / Cotton
125 gr/m²

Taglie / Sizes
S-2XL

Colori / Colours
Bianco / White **0001**



Blu / Blue **4034**





1



2



1 SUMMER
ART.20MA0253

POLO ML / POLO SHIRT LS

Tessuto / Fabric
100% Cotone piquet / Piquet cotton
180 gr/m²

Taglie / Sizes
XS-4XL

Colori / Colours

Bianco / White **0001**



Nero / Black **8000**



Bluette / Light blue **5020**



Blu / Blue **4034**



Grigio / grey **8009**



2 SUMMER
ART.20MA0001

POLO MC / POLO SHIRT SS

Tessuto / Fabric
100% Cotone piquet / Piquet cotton
180 gr/m²

Taglie / Sizes
XS-4XL

Colori / Colours

Bianco / White **0001**



Nero / Black **8000**



Bluette / Light blue **5020**



Blu / Blue **4034**



Azzurro / Azure **5043**



Grigio / grey **8009**



Rosso / Red **2000**



Arancione / orange **1003**



Verde / Green **6031**





T-SHIRT
ART.19MA0251

T-SHIRT ESTIVA / SUMMER T-SHIRT

Tessuto / Fabric	Taglie / Sizes
95% polipropilene cavo / hollow polypropylene	S-2XL
5% elasthan / elasthan	Colori / Colours
80 gr/m ²	Bianco / White 0001



T-SHIRT
ART.19MA0249

T-SHIRT INVERNALE / WINTER T-SHIRT

Tessuto / Fabric	Taglie / Sizes
100% polipropilene cavo / hollow polypropylene	S-2XL
135 gr/m ²	Colori / Colours
	Bianco / White 0001
	Nero / Black 8000



T-SHIRT
ART.19MA0250

T-SHIRT INVERNALE ML / WINTER LS T-SHIRT

Tessuto / Fabric	Taglie / Sizes
100% polipropilene cavo / hollow polypropylene	S-2XL
135 gr/m ²	Colori / Colours
	Nero / Black 8000



CALZA
ART.19CZ0002

CALZA INVERNALE / WINTER SOCKS

Tessuto / Fabric	Taglie / Sizes
60% polipropilene/polypropylene	35/37 - 38/40 - 41/43 - 44/46
30% lenpur/lenpur	Colori / Colours
5% poliammide/polycarbonate	Blu / Blue 4014
5% elasthan/elastane	



CALZAMAGLIA
ART.19CZ0063

CALZAMAGLIA INVERNALE / WINTER TIGHTS

Tessuto / Fabric	Taglie / Sizes
100% polipropilene cavo / hollow polypropylene	S-2XL
135 gr/m ²	Colori / Colours
	Nero / Black 8000



CALZA
ART.19CZ0001

CALZA ESTIVA / SUMMER SOCKS

Tessuto / Fabric	Taglie / Sizes
71% polipropilene/polypropylene	35/37 - 38/40 - 41/43 - 44/46
22% poliammide/polycarbonate	Colori / Colours
7% elasthan/elastane	Blu / Blue 4014





SIGGI HORECA

Casacche e camici

Tunics and coats



NEW

1



1 **ARLIE**
ART.28CS1597

NEW

CASACCA DONNA / LADIES TUNIC

Tessuto / Fabric
35% Cotone / Cotton
65% Poliestere / Polyester
130 gr/m²

Taglie / Sizes
XS - 3XL

Colori / Colours
Bianco-Nero-Turchese / White-Black-Turquoise 0767

Bianco-Nero-Giallo / White-Black-Yellow 0768

Bianco-Fucsia-Viola / White-Fuchsia-Purple 0769





NEW

1



2 **ALIX**
ART.28CS1592
CASACCA DONNA / LADIES TUNIC

NEW

Tessuto / Fabric
35% Cotone / Cotton
65% Poliestere / Polyester
130 gr/m²

Taglie / Sizes
XS -3XL

Colori / Colours
Bianco / White **0001**



Fucsia / Fuchsia **3010**



Blu / Blue **4012**



Turchese / Turquoise **5037**





1

2



1 **ASHLEY**
ART.28CS1598
CASACCA DONNA / LADIES TUNIC

NEW

Tessuto / Fabric
35% Cotone / Cotton
65% Poliestere / Polyester
130 gr/m²

Taglie / Sizes
XS - 3XL

Colori / Colours
Bianco-Nero-Azzurro / White-Black-Turquoise 0770

Turchese-Bianco-Blu / Turquoise-White-Blue 5708



2 **BERTIE**
ART.28CS1594
CASACCA DONNA / LADIES TUNIC

NEW

Tessuto / Fabric
35% Cotone / Cotton
65% Poliestere / Polyester
130 gr/m²

Taglie / Sizes
XS - 3XL

Colori / Colours
Nero-Bianco / Black-White 8715

Bianco-Nero / White-Black 0721





NEW

1



1 ALPHA
ART.28CS1593
CASACCA DONNA / LADIES TUNIC

Tessuto / Fabric
35% Cotone / Cotton
65% Poliestere / Polyester
130 gr/m²

Taglie / Sizes
XS - 3XL

Colori / Colours
Bianco / White **0001**

Giallo / Yellow **0021**

Arancio / Orange **1005**

Celeste / Light blue **5029**

Verde / Green **6030**

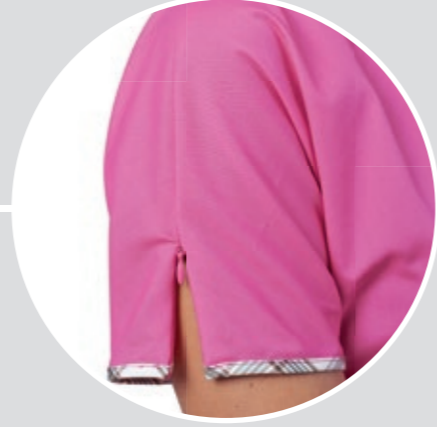


NEW

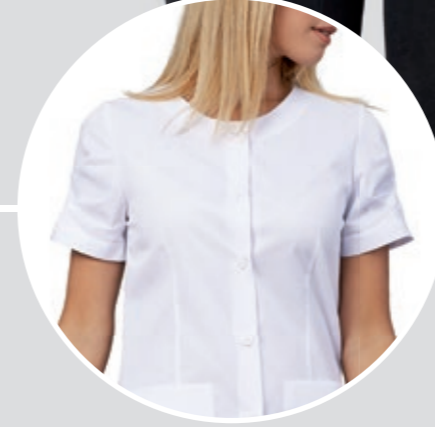
Disponibile anche la variante
a manica lunga AVERILL p. 213
Available also with long sleeves
AVERILL p. 213



1



2



1 GIOIA
ART.28CS1424
CASACCA DONNA / LADIES TUNIC

Tessuto / Fabric
35% Cotone / Cotton
65% Poliestere / Polyester
130 gr/m²

Taglie / Sizes
XS - XXXL

Colori / Colours
Bianco / White **0001**



Giallo / Yellow **0021**



Fucsia / fuchsia **3010**



Sabbia / Sand **7025**



2 FLAVIA
ART.28CS1422
CASACCA DONNA / LADIES TUNIC



Tessuto / Fabric
35% Cotone / Cotton
65% Poliestere / Polyester
130 gr/m²

Taglie / Sizes
XS - XXXL

Colori / Colours
Bianco / White **0001**



Turchese / turquoise **5037**



Viola / purple **3031**





1



2



3



3 DANIELA
ART.28CS0058

CASACCA DONNA / LADIES TUNIC

Tessuto / Fabric
100% Cotone piquet millerighe / Cotton piquet micro striped
124 gr/m²

Taglie / Sizes
XS - XXL

Colori / Colours
Bianco / White 0001



2 VALERIA
ART.28CS0403

CASACCA DONNA / LADIES TUNIC

Tessuto / Fabric
35% Cotone / Cotton
65% Poliestere / Polyester
130 gr/m²

Taglie / Sizes
XS - XXXL

Colori / Colours
Bianco / White 0001

Arancione / Orange 1005

Nero / Black 8000

Turchese / Turquoise 5037

Rosa / Pink 3007

Verde / Green 6030



3 GUENDA
ART.28CS1421

CASACCA DONNA / LADIES TUNIC

Tessuto / Fabric
35% Cotone / Cotton
65% Poliestere / Polyester
130 gr/m²

Taglie / Sizes
XS - XXXL

Colori / Colours
Fucsia / Fuchsia 3010

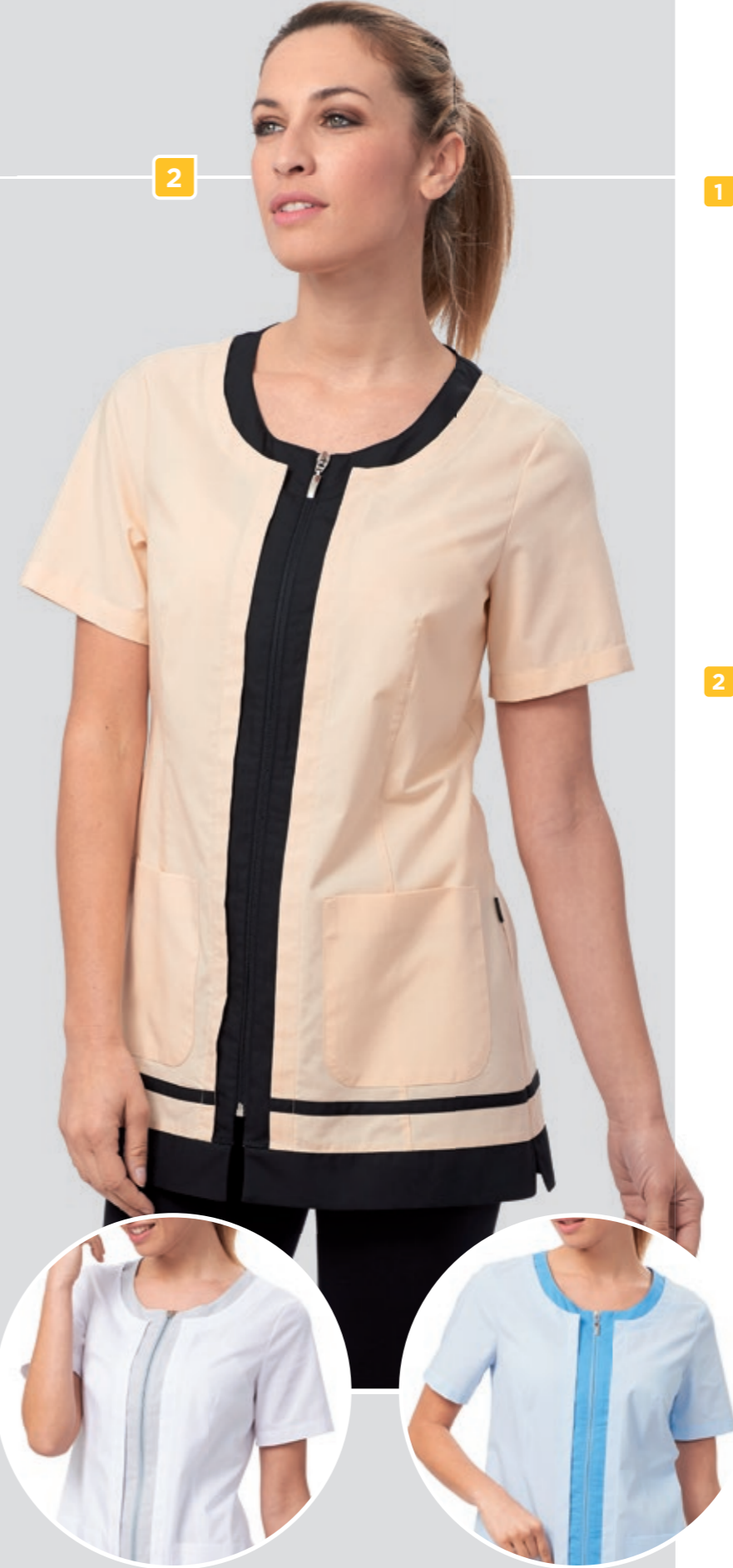
Arancio / Orange 1005

Turchese / Turquoise 5037





1



2



1 DORA
ART.28CS1306
CASACCA DONNA / LADIES TUNIC

Tessuto / Fabric
35% Cotone / Cotton
65% Poliestere / Polyester
130 gr/m²

Taglie / Sizes
XS - XXXL

Colori / Colours
Bluette-Fucsia / Blue-Fuchsia 4715

Bianco-Fucsia / White-Fuchsia 0761

Fucsia-Nero / Fuchsia-Black 3711



2 LYDIA
ART.28CS1308
CASACCA DONNA / LADIES TUNIC

Tessuto / Fabric
35% Cotone / Cotton
65% Poliestere / Polyester
130 gr/m²

Taglie / Sizes
XS - XXXL

Colori / Colours
Crema-Nero / Cream-Black 7708

Bianco-Grigio / White-Grey 0748

Celeste-Azzurro / Light blue-Azure 5707





1



2



1

GRETEL
ART.28CS0859

CASACCA DONNA / LADIES TUNIC

Tessuto / Fabric
35% Cotone / Cotton
65% Poliestere / Polyester
130 gr/m²

Taglie / Sizes
XS - XXXL

Colori / Colours

Bianco-Viola / White-Violet 0725

Viola-Bianco / Violet-White 3703

Bianco-Verde / White-Green 0733



2

GARDENIA
ART.28CS0047

CASACCA DONNA / LADIES TUNIC

Tessuto / Fabric
35% Cotone / Cotton
65% Poliestere / Polyester
130 gr/m²

Taglie / Sizes
S - XXXL

Colori / Colours

Turchese / Turquoise 5037

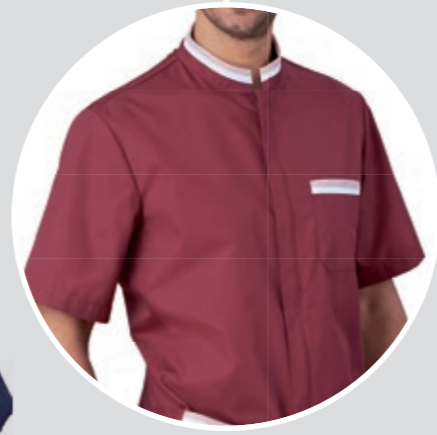
Fucsia / Fuchsia 3010

Verde / Green 6030





1



2

1 **ROBERTO**
ART.28CS1426
CASACCA UOMO / MAN TUNIC

Tessuto / Fabric
35% Cotone / Cotton
65% Poliestere / Polyester
130 gr/m²

Taglie / Sizes
S - XXXL

Colori / Colours
Blu / Blue **4012**

Bordeaux **2038**

Bianco / White **0001**



2 **ILEANA**
ART.28CS1423
CASACCA DONNA / LADIES TUNIC

Tessuto / Fabric
35% Cotone / Cotton
65% Poliestere / Polyester
130 gr/m²

Taglie / Sizes
XS - XXXL

Colori / Colours
Blu / Blue **4012**

Bordeaux **2038**

Bianco / White **0001**





1

2

3



1 ANDREA
ART.28CS0607
CASACCA UOMO / MAN TUNIC

Tessuto / Fabric
35% Cotone / Cotton
65% Poliestere / Polyester
130 gr/m²
Taglie / Sizes
S - XXL
Colori / Colours
Bianco / White **0001**



2 SILVIA
ART.28CS0604
CASACCA DONNA / LADIES TUNIC

Tessuto / Fabric
35% Cotone / Cotton
65% Poliestere / Polyester
130 gr/m²
Taglie / Sizes
S - XXL
Colori / Colours
Bianco / White **0001**
Azzurro / Azure **5030**



3 ANNA
ART.28CS0052
CASACCA DONNA / LADIES TUNIC

Tessuto / Fabric
35% Cotone / Cotton
65% Poliestere / Polyester
130 gr/m²
Taglie / Sizes
S - XXL
Colori / Colours
Azzurro / Azure **5030**
Rosso / Red **2005**
Blu / Blue **4012**





1



2



1 DARCY
ART.28SC0103

NEW

SCAMICIATO DONNA / *LADIES PINAFORE*

Tessuto / *Fabric*
35% Cotone / *Cotton*
65% Poliestere / *Polyester*
130 gr/m²

Taglie / *Sizes*
XS - 3XL

Colori / *Colours*
Bianco-Nero-Fucsia / *White-Black-Fuchsia* 0771



Blu-Sabbia-Giallo / *Blue-Sand-Yellow* 4718



2 DARIEN
ART.28SC0106

NEW

SCAMICIATO DONNA / *LADIES PINAFORE*

Tessuto / *Fabric*
35% Cotone / *Cotton*
65% Poliestere / *Polyester*
130 gr/m²

Taglie / *Sizes*
XS - 3XL

Colori / *Colours*
Bianco / *White* 0001



Sabbia / *Sand* 7025

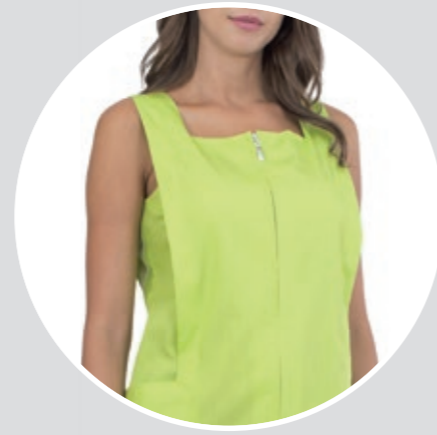




NEW



1



1 FRANCIS
ART.28SC0105

NEW

SCAMICIATO DONNA / *LADIES PINAFORE*

Tessuto / *Fabric*
35% Cotone / *Cotton*
65% Poliestere / *Polyester*
130 gr/m²

Taglie / *Sizes*
XS - 3XL

Colori / *Colours*
Bianco / *White* 0001



Arancione / *Orange* 1005



Azzurro / *Azure* 5030



Verde / *Green* 6030





1



2



1 CLELIA
ART.28SC0092 e

SCAMICIATO DONNA / LADIES PINAFORE

Tessuto / Fabric
35% Cotone / Cotton
65% Poliestere / Polyester
130 gr/m²

Taglie / Sizes
XS - XXXL

Colori / Colours
Bianco / White **0001**



Nero / Black **8000**



Viola / purple **3031**



Sabbia / Sand **7025**



2 SABA
ART.28SC0093 e

SCAMICIATO DONNA / LADIES PINAFORE

Tessuto / Fabric
35% Cotone / Cotton
65% Poliestere / Polyester
130 gr/m²

Taglie / Sizes
XS - XXXL

Colori / Colours
Bianco / White **0001**



Turchese / turquoise **5037**



Fucsia / Fuchsia **3010**





1



2



3



1 HANA
ART.28SC0055

SCAMICIATO DONNA / LADIES PINAFORE

Tessuto / Fabric
35% Cotone / Cotton
65% Poliestere / Polyester
130 gr/m²

Taglie / Sizes
XS - XXXL

Colori / Colours
Bianco / White 0001

Rosso / Red 2005



2 MELANY
ART.28SC0068

SCAMICIATO DONNA / LADIES PINAFORE

Tessuto / Fabric
35% Cotone / Cotton
65% Poliestere / Polyester
130 gr/m²

Taglie / Sizes
S - XXL

Colori / Colours
Bianco / White 0001

Azzurro / Light blue 5030

Fucsia / Fuchsia 3010



3 LIZZY
ART.28SC0056

SCAMICIATO DONNA / LADIES PINAFORE

Tessuto / Fabric
35% Cotone / Cotton
65% Poliestere / Polyester
130 gr/m²

Taglie / Sizes
XS - XXXL

Colori / Colours
Bianco / White 0001

Blu / Blue 4012

Celeste / Light blue 5029

Viola / purple 3031





1



1 AVERILL
ART.28CS1612

NEW

CASACCA DONNA / LADIES TUNIC

Tessuto / Fabric
35% Cotone / Cotton
65% Poliestere / Polyester
130 gr/m²

Taglie / Sizes
XS - 3XL

Colori / Colours
Bianco / White **0001**



Bordeaux **2038**



Blu / Blue **4012**



Azzurro / Azure **5030**



Disponibile anche la variante
a manica corta ALPHA p. 191
Available also with short sleeves
ALPHA p. 191



1



1 INDY
ART.28CS1595
CASACCA DONNA / LADIES TUNIC

NEW

Tessuto / Fabric
35% Cotone / Cotton
65% Poliestere / Polyester
130 gr/m²

Taglie / Sizes
XS - 3XL

Colori / Colours
Bianco-Rosso-Nero / White-Red-Black **0766**
Viola-Rosa-Fucsia / Purple-Pink-Fuchsia **3714**
Turchese-Bianco-Blu / Turquoise-White-Blue **5708**





1



2



1

DEBBY

ART.28CS1312

CASACCA DONNA / LADIES TUNIC

Tessuto / Fabric
35% Cotone / Cotton
65% Poliestere / Polyester
130 gr/m²

Taglie / Sizes
XS - XXXL

Colori / Colours

Bianco-Azzurro / White-azure 5505

Bianco-Blu / White-Blue 4502



2

CRISTINA

ART.28CS0066

CASACCA DONNA / LADIES TUNIC

Tessuto / Fabric
35% Cotone / Cotton
65% Poliestere / Polyester
130 gr/m²

Taglie / Sizes
S - XXL

Colori / Colours

Celeste / Light blue 5029

Blu / Blue 4012





1



2



1 ELETTRA
ART.28CS1434
CASACCA DONNA / LADIES TUNIC

Tessuto / Fabric
35% Cotone / Cotton
65% Poliestere / Polyester
130 gr/m²
Taglie / Sizes
XS - XXXL
Colori / Colours
Bianco-Bordeaux / White-Bordeaux **0759** 
Bianco-Blu / White-Blue **0760**  



2 FRANCESCO
ART.28CS1425
CASACCA UOMO / MEN TUNIC

Tessuto / Fabric
35% Cotone / Cotton
65% Poliestere / Polyester
130 gr/m²
Taglie / Sizes
S - XXXL
Colori / Colours
Bianco-Bordeaux / White-Bordeaux **0759** 





1

2

3

1 EZIO
ART.28CS0057
CASACCA UOMO / MEN TUNIC

Tessuto / Fabric
35% Cotone / Cotton
65% Poliestere / Polyester
130 gr/m²

Taglie / Sizes
S - XXXL

Colori / Colours
Bianco / White **0001**
Nero / Black **8000**

Maniche arrotolabili
Foldable sleeves



2 TIZIANA
ART.28CS0056
CASACCA DONNA / LADIES TUNIC

Tessuto / Fabric
35% Cotone / Cotton
65% Poliestere / Polyester
130 gr/m²

Taglie / Sizes
S - XXXL

Colori / Colours
Bianco / White **0001**
Nero / Black **8000**

Maniche arrotolabili
Foldable sleeves



3 SANDY
ART.28CS0063
CASACCA DONNA / LADIES TUNIC

Tessuto / Fabric
35% Cotone / Cotton
65% Poliestere / Polyester
130 gr/m²

Taglie / Sizes
S - XXL

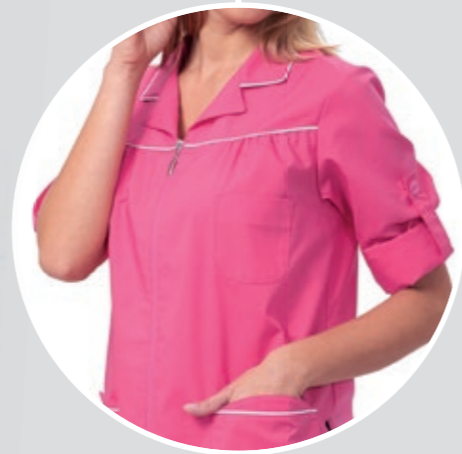
Colori / Colours
Bianco / White **0001**
Azzurro / Azure **5030**
Verde / Green **6023**
Rosso / Red **2005**

Maniche arrotolabili
Foldable sleeves





1



2



1 ELITA
ART.28CS1316

CASACCA DONNA / LADIES TUNIC

Tessuto / Fabric
35% Cotone / Cotton
65% Poliestere / Polyester
130 gr/m²

Taglie / Sizes
XS - XXXL

Colori / Colours
Bianco / White **0001**

Fucsia / Fuchsia **3010**

Rosso / Red **2005**

Azzurro / Azure **4066**



2 NORIS
ART.28CS0062

CASACCA DONNA / LADIES TUNIC

Tessuto / Fabric
35% Cotone / Cotton
65% Poliestere / Polyester
130 gr/m²

Taglie / Sizes
S - XXL

Colori / Colours
Bianco / White **0001**

Fucsia / Fuchsia **3010**

Blu / Blue **4012**



e



1



2



1 MIA
ART.28CA0487/00-0001

CAMICE DONNA / LADIES COAT

Tessuto / Fabric
35% Cotone / Cotton
65% Poliestere / Polyester
130 gr/m²

Taglie / Sizes
XS - XXXL

Colori / Colours
Bordeaux **2038**

Celeste / Light blue **5063**

Grigio / Grey **8045**



2 CLEO
ART.28CA0487/00-0742

CAMICE DONNA / LADIES COAT

Tessuto / Fabric
35% Cotone / Cotton
65% Poliestere / Polyester
130 gr/m²

Taglie / Sizes
XS - XXXL

Colori / Colours

Riga Bianco-Azzurro / Striped White-Azure **5814**





1



2



3



1 BRENDA
ART.28CA0035

CAMICE DONNA / LADIES COAT

Tessuto / Fabric
100% Cotone / Cotton
110 gr/m²

Taglie / Sizes
S - XXL

Colori / Colours
Riga Bianco-Azzurro / Striped White-Azure 5815



2 MONTEREY
ART.28CA0211

CAMICE DONNA / LADIES COAT

Tessuto / Fabric
100% Cotone / Cotton
133 gr/m²

Taglie / Sizes
XS - XXXL

Colori / Colours
Riga Bianco-Azzurro / Striped White-Azure 5809



3 DILETTA
ART.28CA0275

CAMICE DONNA / LADIES COAT

Tessuto / Fabric
100% Cotone / Cotton
140 gr/m²

Taglie / Sizes
S - XXL

Colori / Colours
Bianco / White 0001
Celeste / Light blue 5029





1



2



3



1 ROBERTA
ART.16CA0026
CAMICE DONNA / LADIES COAT

Tessuto / Fabric
35% Cotone / Cotton
65% Poliestere / Polyester
130 gr/m²

Taglie / Sizes
40-60

Colori / Colours

Bianco / White 0001



Blu / Blue 4012



Celeste / Light blue 5029



Azzurro / Azure 5030



Verde / Green 6023



2 ELBA
ART.16CA0027
CAMICE DONNA / LADIES COAT

Tessuto / Fabric
100% Cotone / Cotton
160 gr/m²

Taglie / Sizes
S-XXL

Colori / Colours

Bianco / White 0001



Celeste / Light blue 5029



3 CAPRI
ART.16CA0024
CAMICE UOMO / MAN COAT

Tessuto / Fabric
100% Cotone / Cotton
160 gr/m²

Taglie / Sizes
S - XXXL

Colori / Colours

Bianco / White 0001



Grigio / Grey 8008



Blu / Blue 4012



Celeste / Light blue 5029



Azzurro / Azure 5030



Verde / Green 6016



Confezioni SIGGI Anniversary



Da un'armoniosa collaborazione tra Siggì e Alessio Berto, The Tailor Pattern Support, esperto modellista e cultore dell'arte sartoriale, si sviluppa l'idea di una collezione di abbigliamento professionale ispirata agli anni '50/'60 e che porti con sé un significato celebrativo per l'azienda.

Nasce così la collezione Confezioni Siggì Anniversary, il cui Mood svela un'eleganza d'altri tempi in capi dalle finiture sartoriali, pensati per chi, anche sul posto di lavoro, desidera un look raffinato e retrò chic. La Collezione prende il nome dalla prima denominazione della società 'Confezioni Siggì' e celebra con 'Anniversary' i 50 anni di attività.

The idea arose from a harmonious cooperation between Siggì and Alessio Berto, from The Tailor Pattern Support, a skilled designer and an enthusiast of the tailoring Art: a Workwear Collection inspired to mid- 20th century style and celebratory of Company history. That's the birth of Confezioni Siggì Anniversary collection, which mood reveals an old-time elegance conveyed in finely tailored garments, designed for those who want a refined and retro-chic look, even in the workplace. The collection takes the name from the first registered name of the Company "Confezioni Siggì" and it celebrates by the word "Anniversary" the 50 years of the Company.

 HORECA / anniversary



LA GIACCA DA CAMERIERE THE WAITER JACKET ART.66GA0224/01

Tessuto / Fabric
100% Poliestere / Polyester
180 gr/m²

Taglie / Sizes
44 - 56

Colori / Colours
Avorio / Bone 0002

Nero / Black 8000

▲ **Giacca a doppiopetto come da tradizione: fit asciutto che lascia agio nei movimenti**

Traditional double breasted jacket: slim fit for best comfort in movement

▲ **Spalla tagliata verso il dietro alla "napoletana"**

Neapolitan construction shoulders

▲ **Profilatura interna**

Inside hemming

▲ **Tasche a toppa foderate**

Lined patch pockets

▲ **Maniche foderate**

Lined sleeves

▲ **Spacchi fondo manica apribili**

Workable sleeves splits

▲ **Spacchi dietro laterali**

Front fold for best comfort

▲ **Bottoni dorati come da tradizione**

Traditional golden buttons

▲ **Adatta anche per reception e capo sala**

Also suitable for hall and reception

▲ **Abbottonatura con occhielli a goccia**

Keyhole buttonhole



Confezioni **SIGGI** Anniversary



 HORECA / anniversary

HORECA / anniversary

LA GIACCA DA CUOCO THE CHEF JACKET ART.66GA0223/01

Tessuto / Fabric
100% Cotone / Cotton
190 gr/m²

Taglie / Sizes
44 - 56

Colori / Colours
Avorio / Bone 0002

Nero / Black 8000

▲ **Giacca monopetto di ispirazione coloniale**
Colonial style jacket

▲ **Profilatura interna**
Inside hemming

▲ **Tasche a toppa foderate**
Lined patch pockets

▲ **Spacchi fondo manica apribili**
Workable sleeves splits

▲ **Spacchi dietro laterali**
Back side vents

▲ **Taschino destro a toppa che riprende il taschino del blazer**
Patch pocket reminding blazer pockets

▲ **Bottoni rivestiti in tessuto e staccabili con anellino in metallo**
Fabric wrapped buttons removable through a metal ring

▲ **Abbottonatura con occhielli a goccia**
Keyhole buttonhole



Confezioni
SIGGI
Anniversary



 HORECA / anniversary

HORECA / anniversary

IL GILET DA BARMAN
THE BARTENDER VEST
ART.66GT0142/01

Tessuto / Fabric
100% Poliestere / Polyester
180 gr/m²

Taglie / Sizes
44 - 56

Colori / Colours
Avorio / Bone 0002

Nero / Black 8000

Fit asciutto per essere indossato anche in abbinamento alla giacca doppiopetto

Slim fit suitable for wearing it together with the bartender double breasted jacket

Gilet con collo a scialle

Taxido lapel

Bottoni dorati come da tradizione

Traditional golden buttons

Dietro con arricciatura sulla fodera per adattare il fit alle diverse conformazioni

Back gather on the lining to fit different builds



Confezioni
SIGGI
Anniversary



 HORECA / anniversary



IL PANTALONE
THE TROUSER
ART.66PA1056/01

Tessuto / Fabric
100% Cotone / Cotton
190 gr/m²

Taglie / Sizes
44 - 56

Colori / Colours
Nero / Black **8000**

▶ **Montante alto**
High crotch

▶ **Fianco dritto che rende la vestibilità particolarmente comoda sul davanti**
Straight side for comfortable fit

▶ **Due pieghe sul davanti**
Two front pleats

▶ **Gamba regolare**
Regular leg fit

▶ **Consegnato con fondo sfilato con gli ultimi cm dritti in modo da non alterare la misura del fondo una volta accorciato**
Sold with unsew hem and final straight cms in order to keep the hem fit once it will be cut.





Confezioni SIGGI Anniversary



IL GREMBIULE THE APRON ART.66PZ0369

Tessuto / Fabric
100% Cotone / Cotton
190 gr/m²

Taglie / Sizes
Unica-One Size

Colori / Colours
Avorio / Bone 0002

Nero / Black 8000

▶ **Tasca stondata in abbinamento alle giacche della collezione**

Round pockets matching with other jackets of the collection

▶ **Tessuto abbinato alla giacca da cuoco**
Fabric matches with the Chef jacket



LA TOQUE THE TOQUE ART.66BE0178

Tessuto / Fabric
100% Cotone / Cotton
190 gr/m²

Taglie / Sizes
Unica-One Size

Colori / Colours
Avorio / Bone 0002

▶ **Elastico sul retro per maggior comfort e adattabilità a diverse misure**

Elastic band on backside for best comfort and for fitting different sizes

▶ **Tessuto abbinato alla giacca da cuoco**
Fabric matches with the Chef jacket

